

# Installation Instructions

PCI, PCIe and ISA bus



### Product information

This manual contains the technical installation and important instructions for correct commissioning and usage, as well as production information according to the current status before printing. The content of this manual and the technical product data may be changed without prior notice. ADDI-DATA GmbH reserves the right to make changes to the technical data and the materials included herein.

### Warranty and liability

The user is not permitted to make changes to the product beyond the intended use, or to interfere with the product in any other way.

ADDI-DATA shall not be liable for obvious printing and phrasing errors. In addition, ADDI DATA, if legally permissible, shall not be liable for personal injury or damage to materials caused by improper installation and/or commissioning of the product by the user or improper use, for example, if the product is operated despite faulty safety and protection devices, or if notes in the operating instructions regarding transport, storage, installation, commissioning, operation, thresholds, etc. are not taken into consideration. Liability is further excluded if the operator changes the product or the source code files without authorisation and/or if the operator is guilty of not monitoring the permanent operational capability of working parts and this has led to damage.

### Copyright

This manual, which is intended for the operator and its staff only, is protected by copyright. Duplication of the information contained in the operating instructions and of any other product information, or disclosure of this information for use by third parties, is not permitted, unless this right has been granted by the product licence issued. Non-compliance with this could lead to civil and criminal proceedings.

### ADDI-DATA software product licence

Please read this licence carefully before using the standard software. The customer is only granted the right to use this software if he/she agrees with the conditions of this licence.

The software must only be used to set up the ADDI-DATA products.

Reproduction of the software is forbidden (except for back-up and for exchange of faulty data carriers). Disassembly, decompilation, decryption and reverse engineering of the software are forbidden. This licence and the software may be transferred to a third party if this party has acquired a product by purchase, has agreed to all the conditions in this licence contract and the original owner does not keep any copies of the software.

### Trademarks

- ADDI-DATA, APCI-1500, MSX-Box and MSX-E are registered trademarks of ADDI-DATA GmbH.
- Turbo Pascal, Delphi, Borland C, Borland C++ are registered trademarks of Borland Software Corporation.
- Microsoft .NET, Microsoft C, Visual C++, MS-DOS, Windows 95, Windows 98, Windows 2000, Windows NT, Windows EmbeddedNT, Windows XP, Windows Vista, Windows 7, Windows Server 2000, Windows Server 2003, Windows Embedded and Internet Explorer are registered trademarks of Microsoft Corporation.
- LabVIEW, LabWindows/CVI, DASyLab, DIAdem are registered trademarks of National Instruments Corporation.
- CompactPCI is a registered trademark of PCI Industrial Computer Manufacturers Group.
- VxWorks is a registered trademark of Wind River Systems, Inc.
- RTX is a registered trademark of IntervalZero.

## Warning

**The following risks result from improper implementation and from use of the board contrary to the regulations:**



**Personal injury**



**Damage to the board, PC and peripherals**



**Pollution of the environment**

- Protect yourself, others and the environment!

- Read the safety precautions (yellow leaflet) carefully!

If this leaflet is not enclosed with the documentation, please contact us and ask for it.

- Observe the instructions of this manual!

Make sure that you do not forget or skip any step. We are not liable for damages resulting from a wrong use of the board.

- Pay attention to the following symbols:



### **IMPORTANT!**

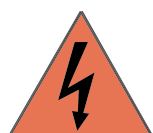
Designates hints and other useful information.



### **WARNING!**

Designates a possibly dangerous situation.

If the instructions are ignored, the board, the PC and/or peripherals may be **destroyed**.



### **WARNING!**

Designates a possibly dangerous situation.

If the instructions are ignored, the board, the PC and/or peripherals may be **destroyed** and persons may be **endangered**.



## Contents

<b>Warning.....</b>	<b>3</b>
<b>1 Introduction .....</b>	<b>6</b>
1.1 Board overview: Software and operating systems .....	6
1.2 Structure of the ADDI-DATA CDs .....	9
1.2.1 CD 1 "ADDI-DATA Standard Drivers" .....	9
1.2.2 CD 2 "ADDI-DATA Technical Manuals" .....	9
<b>2 Summary of instructions.....</b>	<b>10</b>
<b>3 Installation of ADDIPACK boards .....</b>	<b>11</b>
3.1 Board list (PCI/PCIe) .....	11
3.2 Supplied software .....	13
3.3 Installation under Windows XP/2000 .....	14
3.3.1 First software and board installation.....	14
3.3.2 Installation of further ADDIPACK boards .....	17
3.4 Installation under Windows Vista (32-bit) .....	18
3.4.1 First software and board installation.....	18
3.4.2 Installation of further ADDIPACK boards .....	25
3.5 Installation under Windows 7 .....	26
3.5.1 First software and board installation.....	26
3.5.2 Installation of further ADDIPACK boards .....	31
3.6 Tool installation .....	32
3.6.1 Manual ADDIPACK installation .....	32
3.6.2 Manual ADDEVICE MAPPER installation (optional) .....	32
3.6.3 Sample installation.....	32
<b>4 Installation of ADDIREG boards .....</b>	<b>33</b>
4.1 Installation of ADDIREG boards (PCI/PCIe).....	33
4.1.1 Board list.....	33
4.1.2 Supplied software .....	34
4.1.3 Installation under Windows XP/2000 .....	34
4.1.4 Installation under Windows Vista (32-bit) .....	35
4.1.5 Installation under Windows 7 .....	40
4.1.6 Installation of 16-bit drivers .....	45
4.2 Installation of ADDIREG boards (ISA).....	46
4.2.1 Board list.....	46
4.2.2 Supplied software .....	46
4.2.3 Installation under Windows XP/2000 .....	47
4.2.4 Installation of 16-bit drivers .....	48
4.3 Tool installation .....	48
4.3.1 Manual ADDIREG installation.....	48
4.3.2 Sample installation.....	48
<b>5 Installation without ADDIPACK or ADDIREG .....</b>	<b>49</b>
5.1 Board list (PCI/PCIe) .....	49
5.2 Supplied software .....	49
5.3 Installation under Windows XP/2000/Server 2003 .....	50

5.3.1	First software and board installation .....	50
5.3.2	Installation of further boards without ADDIPACK/ADDIREG .....	50
5.4	Installation under Windows Vista (32-bit) .....	51
5.4.1	First software and board installation .....	51
5.4.2	Installation of further boards without ADDIPACK/ADDIREG .....	54
5.5	Installation under Windows 7 .....	55
5.5.1	First software and board installation .....	55
5.5.2	Installation of further boards without ADDIPACK/ADDIREG .....	62
5.5.3	Replacement of boards without ADDIPACK/ADDIREG .....	63
5.6	Installation of 16-bit drivers .....	64
5.7	Installation of the MTTY testing program .....	64
<b>6</b>	<b>Software update .....</b>	<b>65</b>
6.1	Update under Windows XP/2000/Vista (32-bit)/7 .....	65
6.1.1	Driver and program update .....	65
6.1.2	INF file update (PCI/PCIe boards) .....	65
<b>7</b>	<b>Uninstallation of software .....</b>	<b>68</b>
7.1	Uninstallation under Windows XP/2000/Vista (32-bit)/7 .....	68
7.1.1	Uninstallation of drivers and programs .....	68
7.1.2	Uninstallation of INF files (PCI/PCIe boards) .....	68
<b>8</b>	<b>Contact and support .....</b>	<b>70</b>

## Figures

Fig. 1-1:	CD 1: Menu bar above .....	9
Fig. 1-2:	CD 2: Menu bar above .....	9

## Tables

Table 1-1:	Board overview .....	6
Table 3-1:	ADDIPACK board list (PCI/PCIe) .....	11
Table 4-1:	ADDIREG board list (PCI/PCIe) .....	33
Table 4-2:	ADDIREG board list (ISA) .....	46
Table 5-1:	List of boards without ADDIPACK or ADDIREG (PCI/PCIe) .....	49

# 1 Introduction



## IMPORTANT!

The ADDI-DATA boards are installed in different ways depending on their **software and operating systems**.

We recommend you to read only those chapters that concern your ADDI-DATA board and the applied operating system.

## 1.1 Board overview: Software and operating systems

Table 1-1: Board overview

Board	Applied software			Operating system			
	ADDIPACK	ADDIREG	None	Win 7	Vista 32-bit	XP/2000	MS-DOS
APCI-035	x			x	x	x	
APCI-1016	x			x	x	x	
APCI-1032	x			x	x	x	
APCI-1500		x <sup>(1)</sup>		x	x	x	x
APCI-1516	x			x	x	x	
APCI-1564	x			x	x	x	
APCI-1648	x			x	x	x	
APCI-1696	x			x	x	x	
APCI-1710		x		x	x	x	
APCI-2016	x			x	x	x	
APCI-2032	x			x	x	x	
APCI-2200	x			x	x	x	
APCI-3000	x			x	x	x	
APCI-3001		x <sup>(1)</sup>		x	x	x	x
APCI-3002	x			x	x	x	
APCI-3003	x			x	x	x	
APCI-3006	x			x	x	x	
APCI-3010	x			x	x	x	
APCI-3016	x			x	x	x	
APCI-3100	x			x	x	x	
APCI-3106	x			x	x	x	
APCI-3110	x			x	x	x	
APCI-3116	x			x	x	x	
APCI-3120		x <sup>(1)</sup>		x	x	x	x

Board	Applied software			Operating system			
	ADDIPACK	ADDIREG	None	Win 7	Vista 32-bit	XP/2000	MS-DOS
APCI-3122	X			X	X	X	
APCI-3200	X			X	X	X	
APCI-3300	X			X	X	X	
APCI-3500	X			X	X	X	
APCI-3501	X			X	X	X	
APCI-3504	X			X	X	X	
APCI-3600		X		X	X	X	
APCI-3701	X			X	X	X	
APCI-3702	X			X	X	X	
APCI-7300-3			X	X	X	X	
APCI-7420-3			X	X	X	X	
APCI-7500-3			X	X	X	X	
APCI-7800-3			X	X	X	X	
APCLe-1502	X			X	X	X	
APCLe-1516	X			X	X	X	
APCLe-1532	X			X	X	X	
APCLe-1711		X		X	X	X	
APCLe-2200	X			X	X	X	
APCLe-3021	X			X	X	X	
APCLe-3121	X			X	X	X	
APCLe-3521	X			X	X	X	
APCLe-7300			X	X	X	X	
APCLe-7420			X	X	X	X	
APCLe-7500			X	X	X	X	
APCLe-7800			X	X	X	X	
CPCI-1500		X		X	X	X	
CPCI-1710		X		X	X	X	
CPCI-1711		X		X	X	X	
CPCI-3001		X		X	X	X	
CPCI-3009		X		X	X	X	
CPCI-3120		X		X	X	X	
CPCI-7500			X	X	X	X	
PA 301		X				X	X
PA 302		X				X	X
PA 311		X				X	X
PA 731		X				X	X
PA 1000		X				X	X
PA 1500		X				X	X
PA 1508		X				X	X

Board	Applied software			Operating system			
	ADDIPACK	ADDIREG	None	Win 7	Vista 32-bit	XP/2000	MS-DOS
<b>PA 1700-2</b>		X				X	X
<b>PA 2000</b>		X				X	X
<b>PA 3100</b>		X				X	X
<b>PC104-PLUS 1500</b>	X			X	X	X	

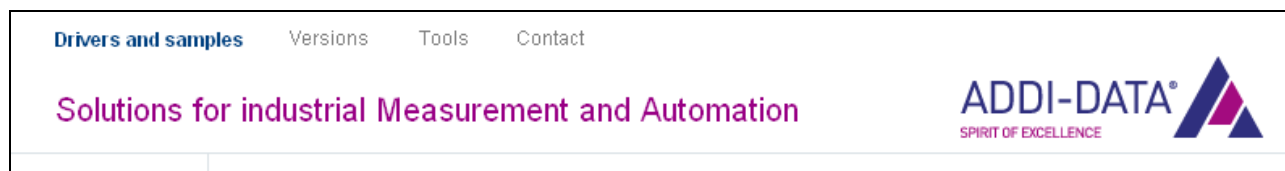
<sup>(1)</sup> You can install these boards under ADDIPACK using ADDICONFIGURATOR. However, the functions of the boards APCI/CPCI-1500, APCI/CPCI-3001 and APCI/CPCI-3120 can only be used to a limited extent then (see the Technical Description "Board management with ADDIPACK: APCI-1500, APCI-3120, APCI-3001").



## 1.2 Structure of the ADDI-DATA CDs

### 1.2.1 CD 1 “ADDI-DATA Standard Drivers”

**Fig. 1-1: CD 1: Menu bar above**

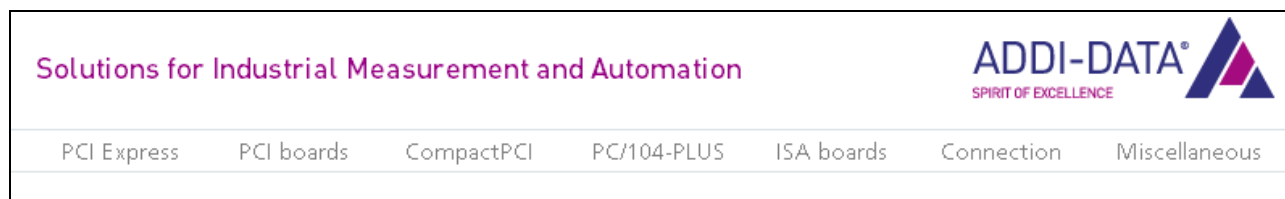


The menu bar above contains the item “Drivers and samples”. From here, you can access the drivers, programs and samples you wish to install.

- Select from the left-hand side menu the category to which your board belongs.
- Click on the name of your board and then on the requested operating system.

### 1.2.2 CD 2 “ADDI-DATA Technical Manuals”

**Fig. 1-2: CD 2: Menu bar above**



The menu bar above contains the product categories. From here, you can access the technical manuals and installation instructions.

- Select the requested product category and then your product.

## 2 Summary of instructions



1. Switch off the PC.



2. Insert the board.



3. Fit the accessories.



4. Start up the PC.

**A**

5. The hardware wizard opens.  
Follow the program instructions.



6. Insert CD 1 "ADDI-DATA Standard Drivers".

**A**

7. The CD browser interface is displayed.  
Reduce its size if it overlaps the hardware wizard.

**A**

8. The "InstallShield Wizard" opens.  
Follow the program instructions.



9. Close the window.



= manual steps for the user

**A**

= automatic procedure

### 3 Installation of ADDIPACK boards

#### 3.1 Board list (PCI/PCIe)

**Table 3-1: ADDIPACK board list (PCI/PCIe)**

<b>Board</b>	<b>Description</b>
<b>APCI-035</b>	Watchdog board, optically isolated, 4 watchdogs/timers, PCI bus
<b>APCI-1016</b>	Digital input board, optically isolated, 16 digital inputs, 24 V, PCI bus
<b>APCI-1032</b>	Digital input board, optically isolated, 32 digital inputs, 24 V, PCI bus
<b>APCI-1516</b>	Digital I/O board, optically isolated, 16 digital inputs and outputs, 24 V, PCI bus
<b>APCI-1564</b>	Digital I/O board, optically isolated, 64 digital inputs and outputs, 24 V, PCI bus
<b>APCI-1648</b>	TTL I/O board, 48 digital TTL inputs and outputs, PCI bus
<b>APCI-1696</b>	TTL I/O board, 96 digital TTL inputs and outputs, PCI bus
<b>APCI-2016</b>	Digital output board, optically isolated, 16 digital outputs, 24 V, PCI bus
<b>APCI-2032</b>	Digital output board, optically isolated, 32 digital outputs, 24 V, PCI bus
<b>APCI-2200</b>	Relay board, optically isolated, 8/16 relays, 8 digital inputs, 24 V, PCI bus
<b>APCI-3000</b>	Analog input board, 16 SE/8 diff. inputs, 12-bit, PCI bus
<b>APCI-3002</b>	Analog input board, optically isolated, 16/8/4 diff. inputs, 16-bit, PCI bus
<b>APCI-3003</b>	Analog input board, optically isolated, 4 diff. inputs, 16-bit, PCI bus
<b>APCI-3006</b>	Analog input board, 16 SE/8 diff. inputs, 16-bit, PCI bus
<b>APCI-3010</b>	Analog input board, optically isolated, 16 SE/8 diff. inputs, 12-bit, PCI bus
<b>APCI-3016</b>	Analog input board, optically isolated, 16 SE/8 diff. inputs, 16-bit, PCI bus
<b>APCI-3100</b>	Multifunction board, 16 SE/8 diff. inputs, 4 analog outputs, 12-bit, PCI bus
<b>APCI-3106</b>	Multifunction board, 16 SE/8 diff. inputs, 4 analog outputs, 16-bit, PCI bus
<b>APCI-3110</b>	Multifunction board, optically isolated, 16 SE/8 diff. inputs, 4 analog outputs, 12-bit, PCI bus
<b>APCI-3116</b>	Multifunction board, optically isolated, 16 SE/8 diff. inputs, 4 analog outputs, 16-bit, PCI bus
<b>APCI-3200</b>	Temperature measurement board, optically isolated, 16/8/4 channels for thermocouples, Pt100, RTD, 18-bit, PCI bus

Board	Description
<b>APCI-3300</b>	Pressure measurement board, optically isolated, up to 8 channels for strain gauges, 18-bit, PCI bus
<b>APCI-3500</b>	Analog output board, low budget, 4 analog outputs, 12-bit, PCI bus
<b>APCI-3501</b>	Analog output board, optically isolated, 8 analog outputs, 14-bit, PCI bus
<b>APCI-3701</b>	Length measurement board, 16-bit, 16 or 8 inductive transducers, LVDT, half-bridge, PCI bus
<b>APCI-3702</b>	Length measurement board, 16-bit, simultaneous acquisition of 5 inductive transducers, LVDT, half-bridge, PCI bus
<b>APCIe-1502</b>	Digital I/O board, optically isolated, 32 digital inputs and outputs, 24 V, PCI Express bus
<b>APCIe-1516</b>	Digital I/O board, optically isolated, 16 digital inputs and outputs, 24 V, PCI Express bus
<b>APCIe-1532</b>	Digital I/O board, optically isolated, 32 digital inputs and outputs, 24 V, PCI Express bus
<b>APCIe-2200</b>	Relay board, optically isolated, 8/16 relays, 8/16 digital inputs, 24 V, PCI Express bus
<b>APCIe-3021</b>	Analog input board, optically isolated, 16 SE/8 diff. inputs, 16-bit, PCI Express bus
<b>APCIe-3121</b>	Multifunction board, 16 SE/8 diff. inputs, 8 analog outputs, 16-bit, PCI Express bus
<b>APCIe-3521</b>	Analog output board, optically isolated, 8/4 analog outputs, voltage/current, 16-bit, PCI Express bus

## 3.2 Supplied software

A driver CD (CD 1) is supplied with each board. The CD contains, in particular, the ADDIPACK package for Windows XP/2000/Vista (32-bit)/7.

For a more detailed description of your ADDIPACK board, see CD 2 "ADDI-DATA Technical Manuals".

**ADDIPACK** is composed of:

- **ADDIREG:** ADDIREG is a 32-bit program for Windows XP/2000/Vista (32-bit)/7. With this program, the user can register all hardware information necessary to operate ADDI-DATA PC boards.

### **● IMPORTANT!**

**i** Only for ADDIREG boards (see Chapter 1.1), ADDIREG needs to be installed separately from CD 1 (see Chapter 4.3.1).

- **ADDIDRIVER** comprises API functions to operate the 32-bit "universal" ADDI-DATA boards.
- **ADDEVICE MANAGER** configures the virtual board (see next point).
- **ADDI-DATA virtual board:** ADDI-DATA software is based on the principle of a virtual board, because the functions (for example digital inputs, analog outputs, timer, etc) of all "universal" ADDI-DATA boards installed in a PC are transposed as the functions of a single virtual board. This board features a whole pool of functions from which the functions can be called up without activating a specific board.

**ADDEVICE MAPPER** has been specifically developed for ADDIPACK boards to facilitate the management of the virtual board. With this program, you can optimally adapt the virtual board to your application requirements.

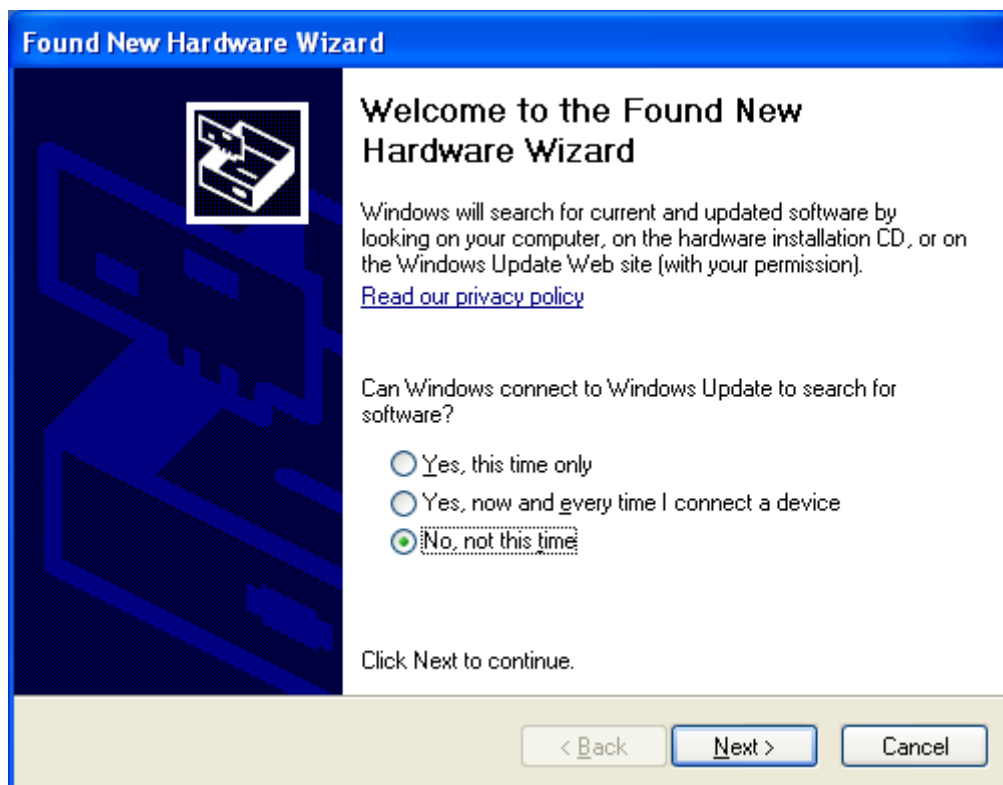
### **● IMPORTANT!**

**i** Some of the functions of the **ADDEVICE MAPPER** program require the browser Internet Explorer version 6 or higher to be installed on your computer.

### 3.3 Installation under Windows XP/2000

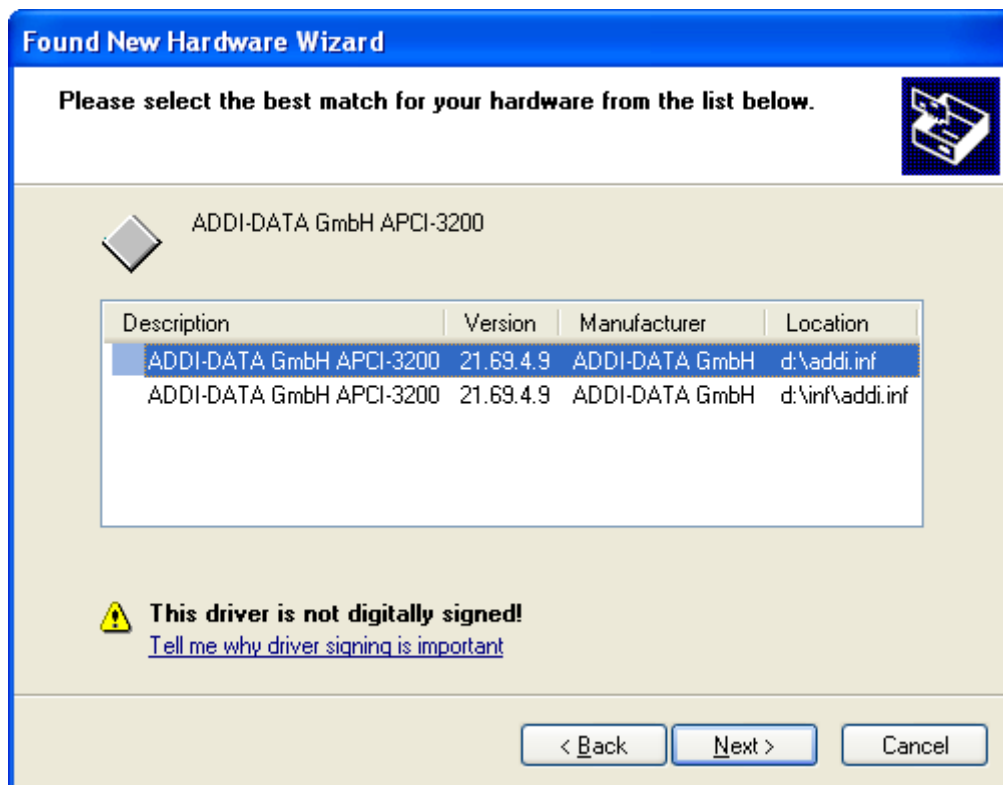
#### 3.3.1 First software and board installation

1. Switch off the PC.
2. Insert the board and fit the accessories.
3. Start up the PC and log in with administrator rights.
4. The hardware wizard opens to install the INF files and the driver. Select the option "No, not this time".

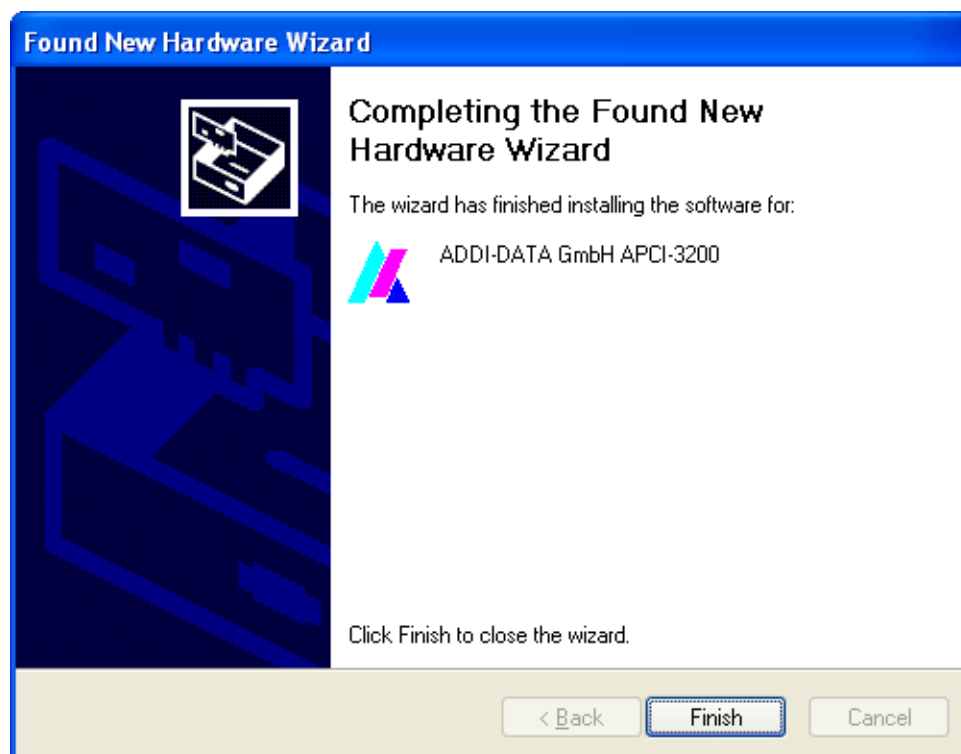


5. Insert CD 1 "ADDI-DATA Standard Drivers" into the CD drive.
6. The CD 1 browser interface is automatically displayed. Reduce its size if it overlaps the hardware wizard.
7. Follow the instructions of the hardware wizard.

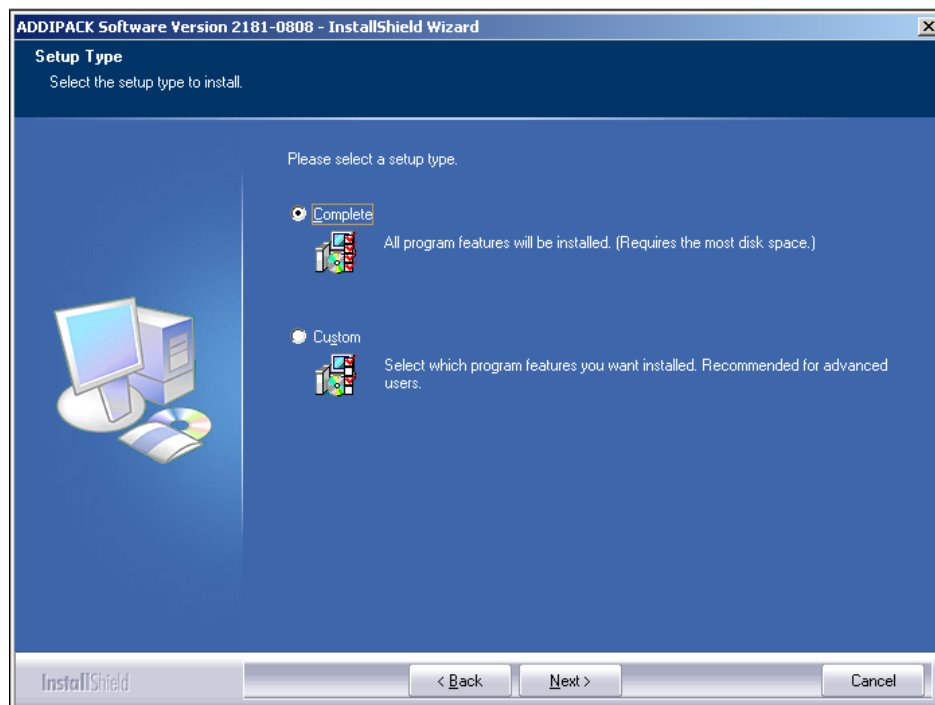
8. Select the requested driver and click on "Next".



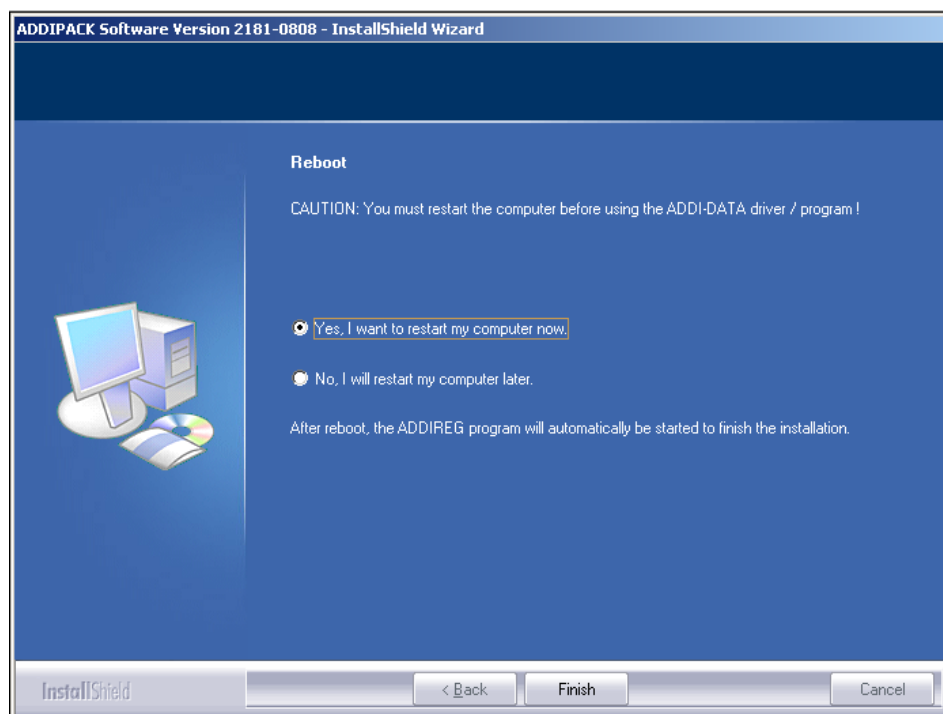
9. Click on "Finish".



10. The installation program "InstallShield Wizard" automatically opens to install the ADDIPACK software. Follow the program instructions.
11. Select the setup type "Complete".



12. In the "Reboot" window, use the default "Yes, I want to restart my computer now." and click on "Finish".





After the PC has rebooted, information on the status of the inserted ADDI-DATA boards is displayed in the window "ADDIDriver board clear/insert list".

**13.** By clicking on "More information", the ADDEVICE MANAGER opens. With this program, you can check the current configuration of the board and adapt it if required.

**14.** Close the ADDEVICE MANAGER in case it is open.

**15.** In the window "ADDIDriver board clear/insert list", click on "OK".

The installation is finished. The board is ready for operation.

### 3.3.2 Installation of further ADDIPACK boards

**1.** Switch off the PC.

**2.** Insert another board and fit the accessories.

**3.** Start up the PC and log in with administrator rights.

CD 1 "ADDI-DATA Standard Drivers" must be inserted in the CD drive.

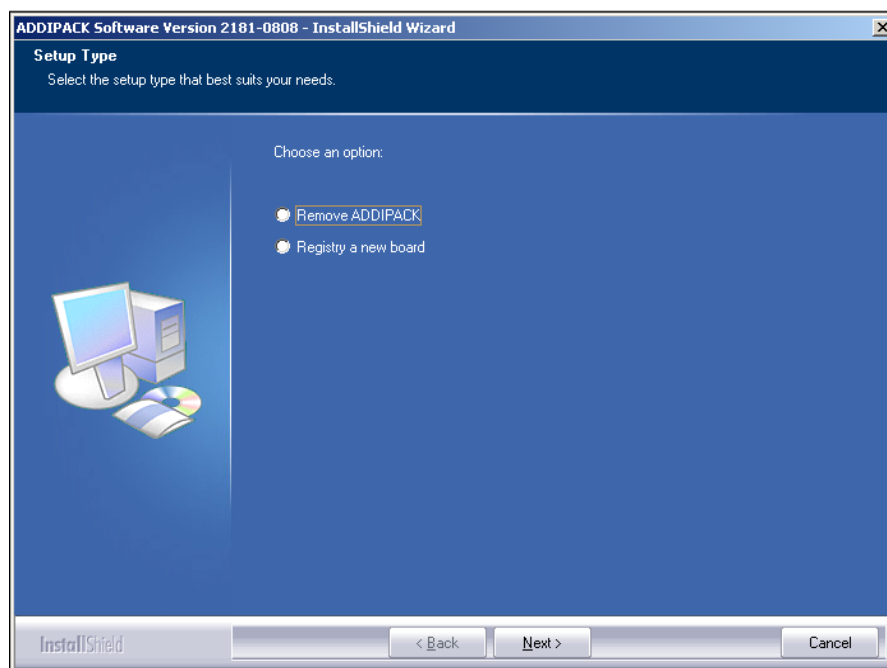
**4.** The hardware wizard opens to install the INF files and the driver. Select the option "No, not this time".

**5.** If CD 1 has been inserted anew, the CD browser interface opens. Reduce its size if it overlaps the hardware wizard.

**6.** Follow the instructions of the hardware wizard.

The installation program "InstallShield Wizard" opens.

If ADDIPACK is already installed on the PC, you have two options:



- a) Register the board with the installed ADDIPACK ("Register a new board"). After this, continue with step 7.
- b) If there is an earlier ADDIPACK version installed on your PC, click on "Remove ADDIPACK" and then on "Finish". After uninstalling the program, you have to install the latest ADDIPACK version manually from CD 1. For this, continue with Chapter 3.6.1 and afterwards with step 7.

Information on the status of the inserted ADDI-DATA boards is displayed in the window "ADDIDriver board clear/insert list".

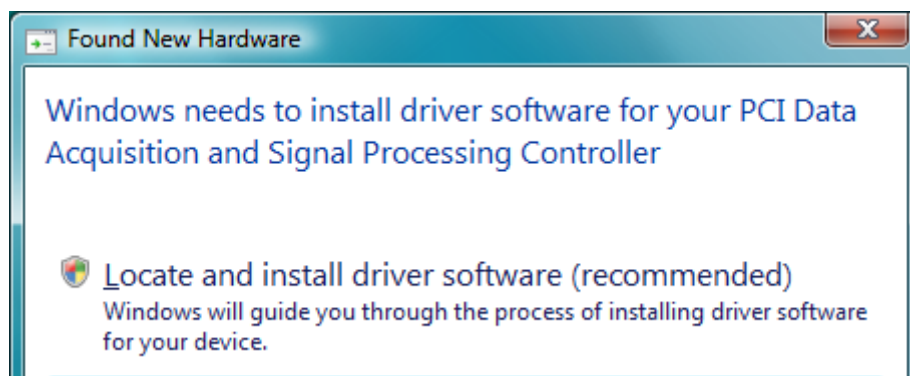
7. By clicking on "More information", the ADDEVICE MANAGER opens. With this program, you can check the current configuration of the board and adapt it if required.
8. Close the ADDEVICE MANAGER in case it is open.
9. In the window "ADDIDriver board clear/insert list", click on "OK".
10. In the window of the "InstallShield Wizard", click on "Finish".

The installation is finished. The board is ready for operation.

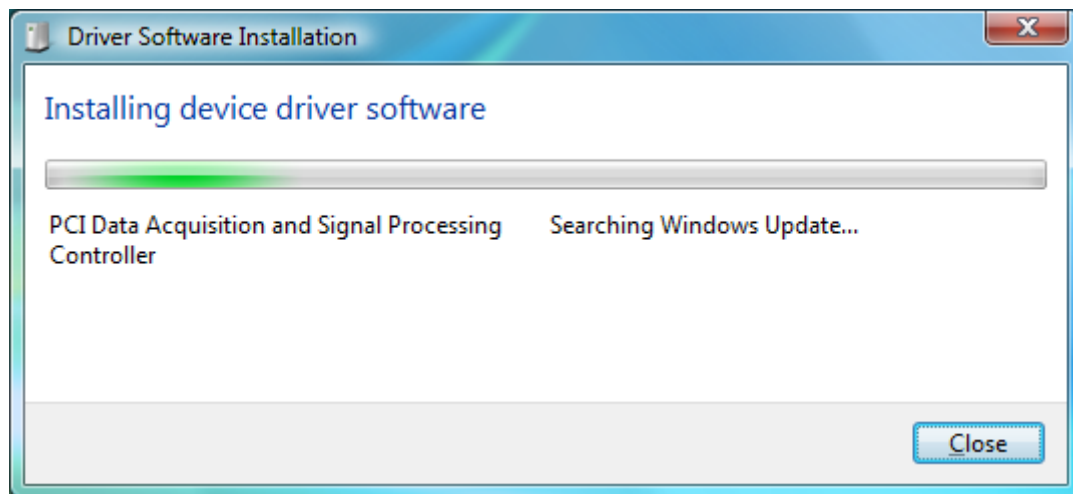
## 3.4 Installation under Windows Vista (32-bit)

### 3.4.1 First software and board installation

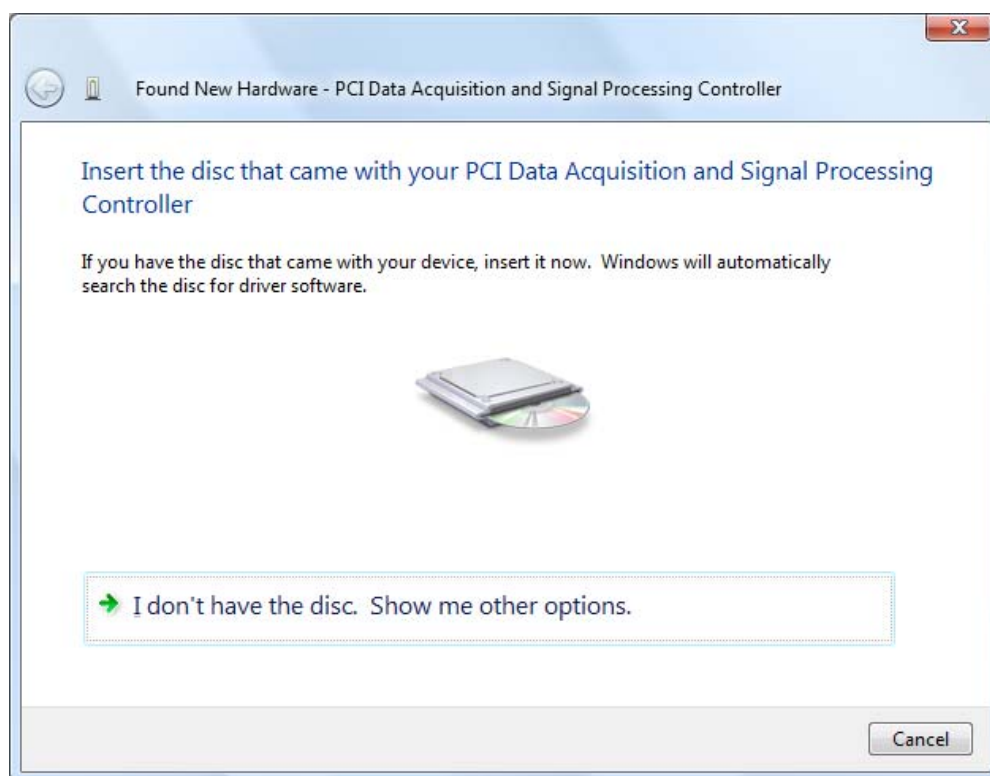
1. Switch off the PC.
2. Insert the board and fit the accessories.
3. Start up the PC and log in with administrator rights.
4. The window "Found New Hardware" (hardware wizard) is displayed. Click on "Locate and install driver software (recommended)".



5. Follow the program instructions until the window below opens.

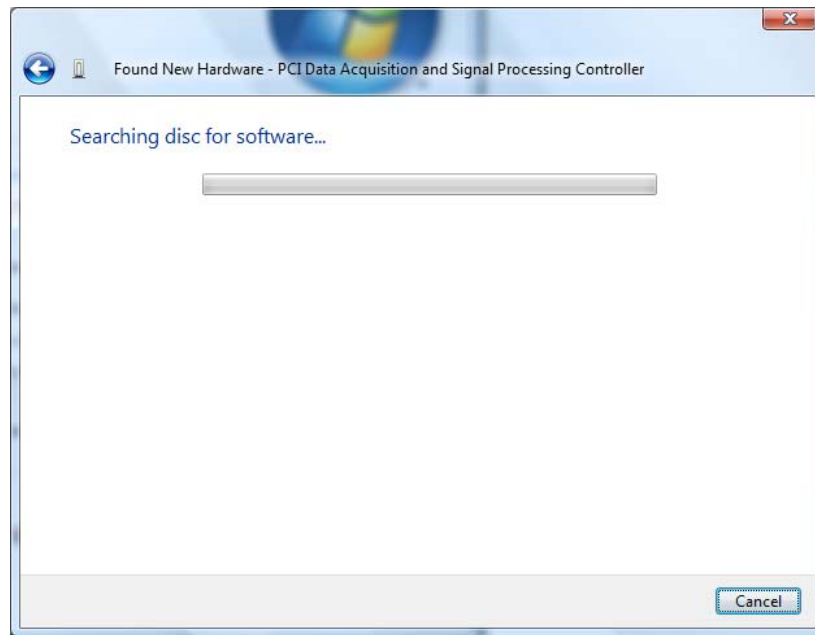


The following window is automatically displayed:



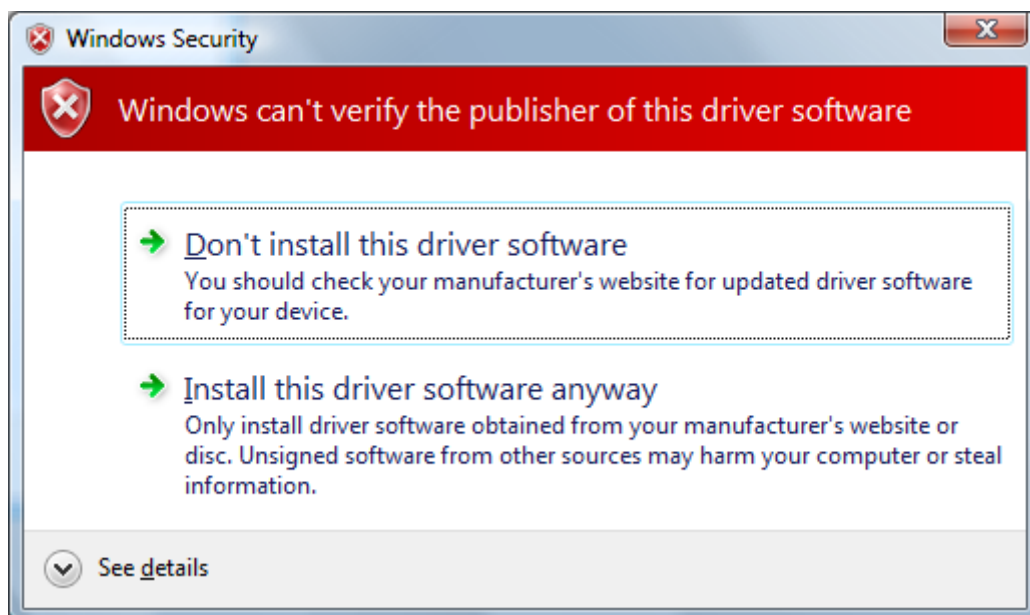
The installation of the device driver software takes some time.

6. In the meantime, insert CD 1 "ADDI-DATA Standard Drivers" into the CD drive.
7. In case the CD 1 browser interface opens, reduce its size if it overlaps the hardware wizard.

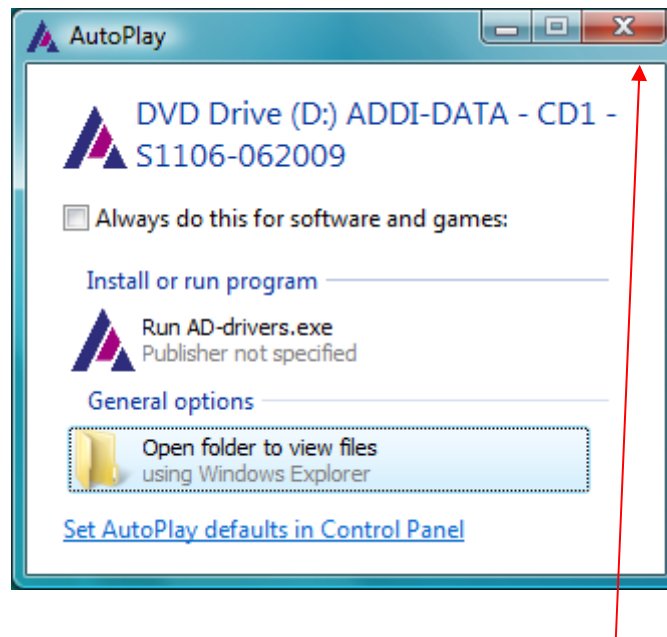


A Windows security warning is displayed.

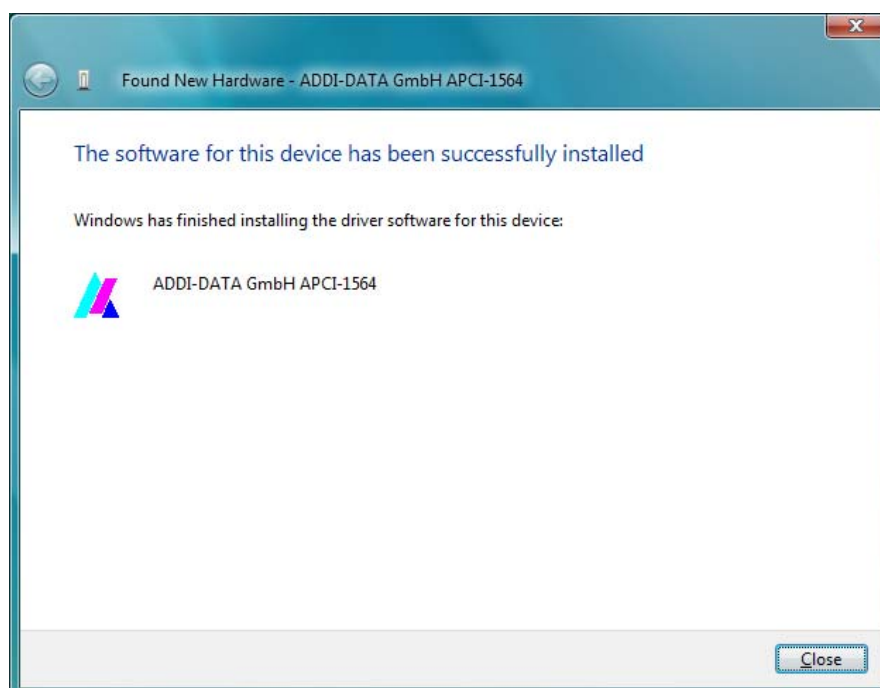
**8.** Click on "Install this driver software anyway".



Depending on the Windows setting, the following window might be displayed:

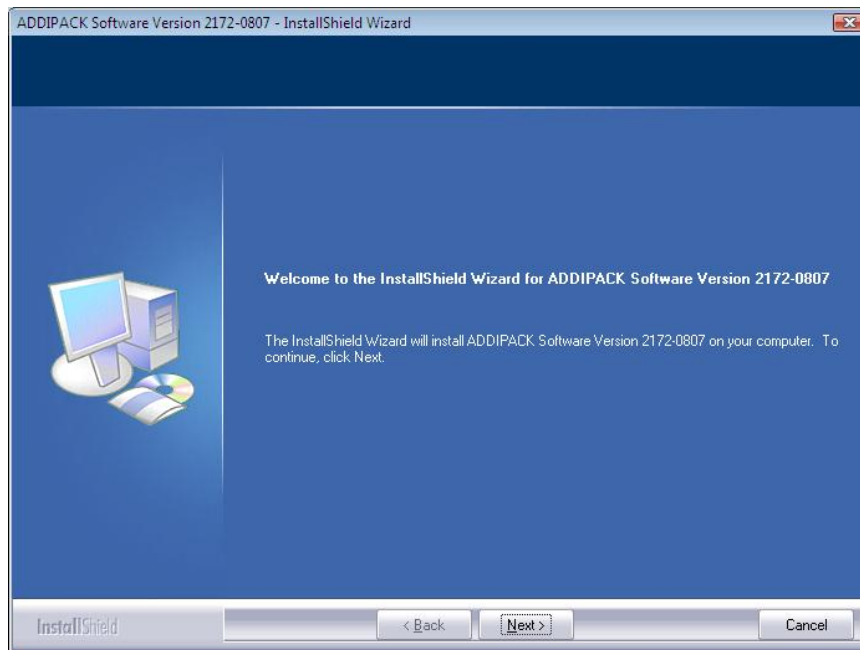


9. Close this window by clicking on the button indicated above.  
The installation of the driver software is finished.

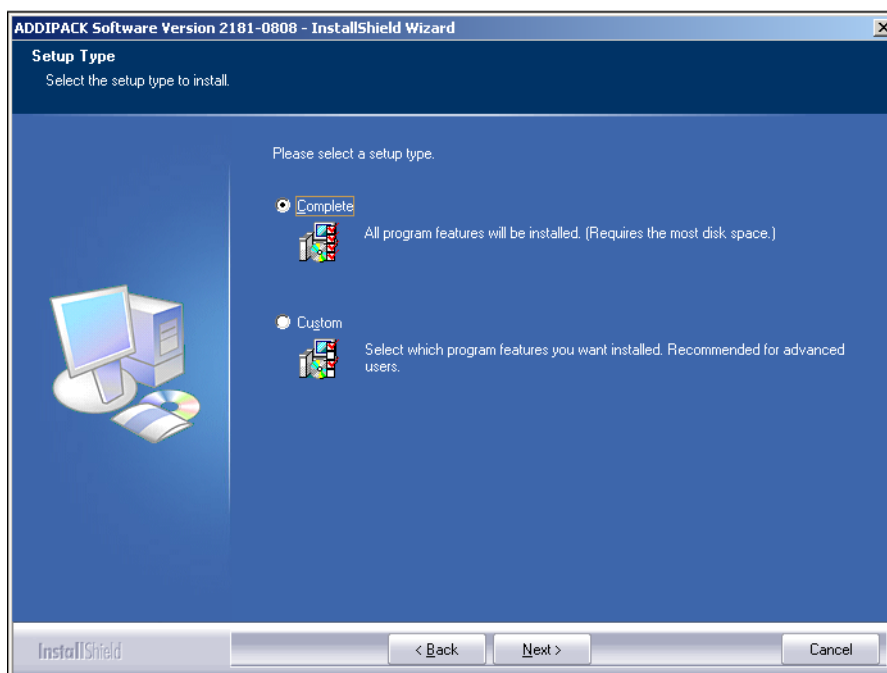


The installation program "InstallShield Wizard" automatically opens to install the ADDIPACK software.

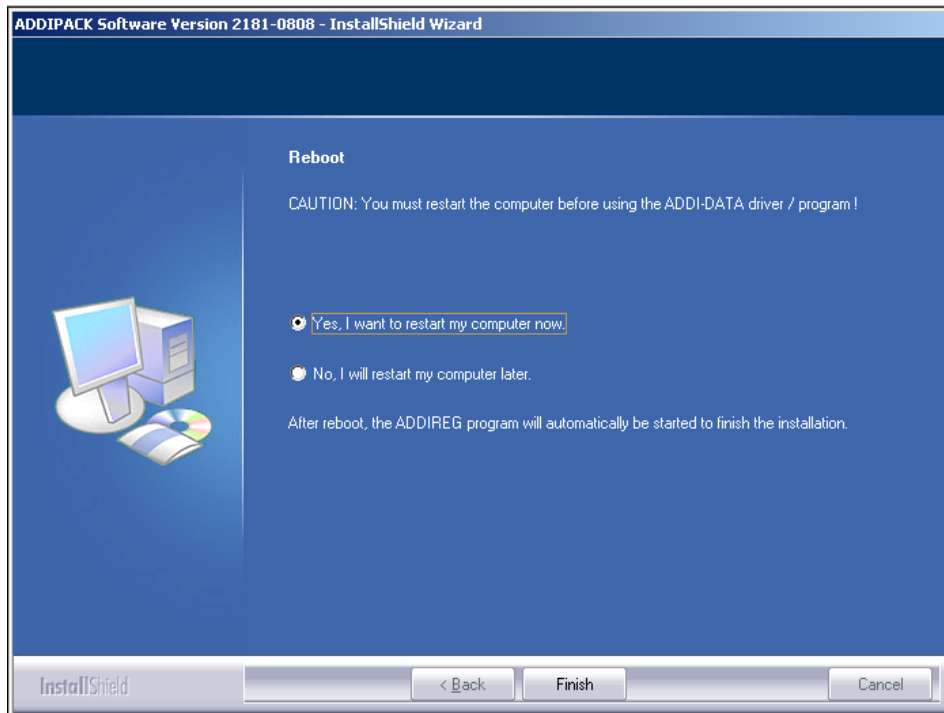
- 10.** If the installation program does not open automatically, you have to open it manually from CD 1. The "setup.exe" file is located in the directory "ADDIPACK\driver\Disk1".



- 11.** Follow the program instructions.  
**12.** Select the setup type "Complete".

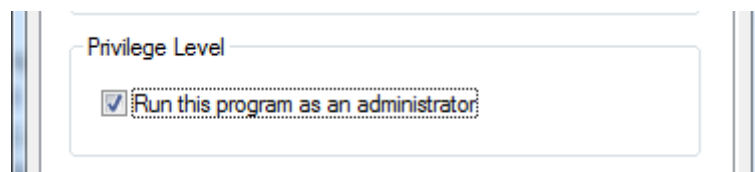


- 13.** When the following window is displayed, you have to provide ADDIREG and the ADDEVICE MANAGER with administrator rights.



In the Windows Explorer, open the folder "C:\Windows". Right-click on the file "ADDIREG.exe" and select "Properties". On the tab "Compatibility", in the section "Privilege Level", select the check box "Run this program as an administrator".

Repeat these steps with the file "ADDeviceManager.exe".



- 14.** Apart from the "InstallShield Wizard", close all programs.  
**15.** In the "Reboot" window (see step 13), use the default "Yes, I want to restart my computer now." and click on "Finish".

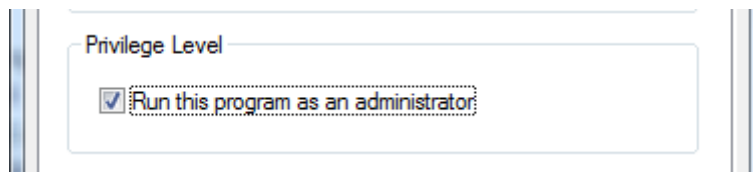
After the PC has rebooted, information on the status of the inserted ADDI-DATA boards is displayed in the window "ADDIDriver board clear/insert list".

- 16.** By clicking on "More information", the ADDEVICE MANAGER opens. With this program, you can check the current configuration of the board and adapt it if required.  
**17.** Close the ADDEVICE MANAGER in case it is open.

**18.** In the window "ADDIDriver board clear/insert list", click on "OK".  
The installation is finished. The board is ready for operation.

**Optional:** Installation of the ADDEVICE MAPPER

- 1.** Install the ADDEVICE MAPPER program (see Chapter 3.6.2).
- 2. Important:** Before starting the ADDEVICE MAPPER, perform the following steps:  
In the Windows Explorer, open the folder "C:\Windows". Right-click on the file "ADDeviceMapper.exe" and select "Properties". On the tab "Compatibility", in the section "Privilege Level", select the check box "Run this program as an administrator".



- 3.** If desired, you can install the samples now (see Chapter 3.6.3).

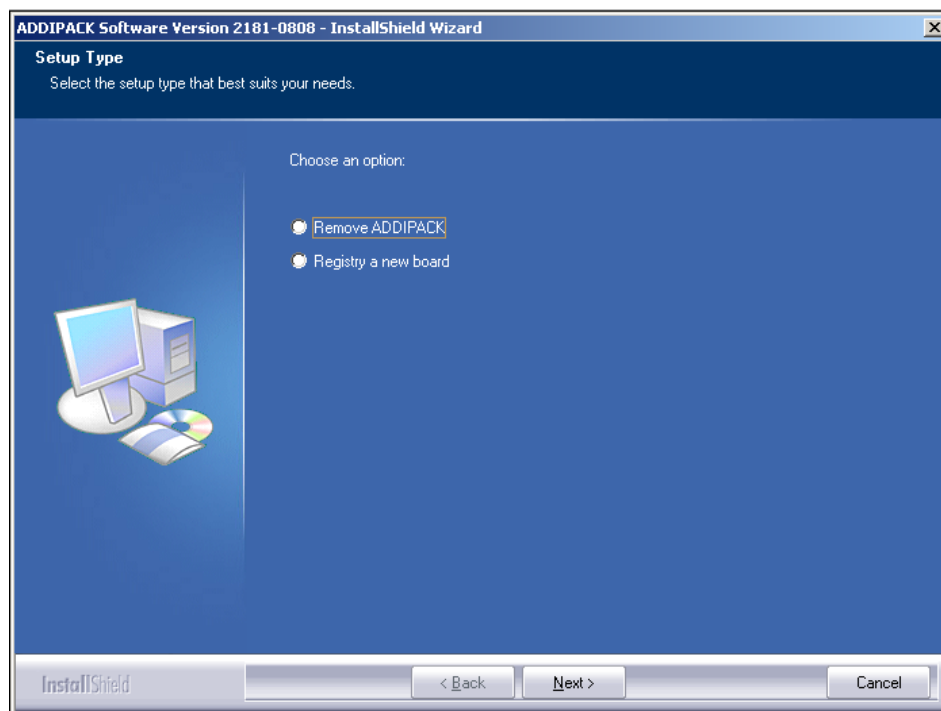


### 3.4.2 Installation of further ADDIPACK boards

1. Switch off the PC.
2. Insert another board and fit the accessories.
3. Start up the PC and log in with administrator rights.
4. Repeat steps 4 to 9 in Chapter 3.4.1.

CD 1 "ADDI-DATA Standard Drivers" must be inserted in the CD drive.

5. In the "InstallShield Wizard" program, select the option "Register a new board".



The board is automatically registered.

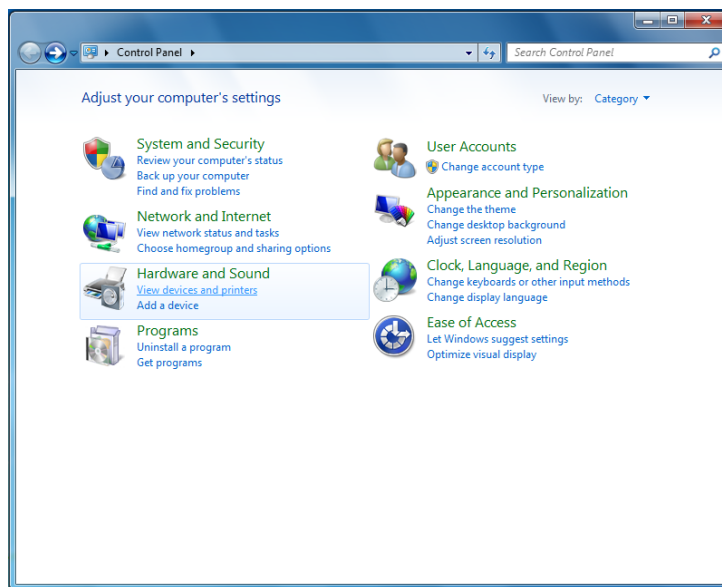
6. Follow the program instructions.
7. In the window "ADDIDriver board clear/insert list", click on "OK".

The installation is finished. The board is ready for operation.

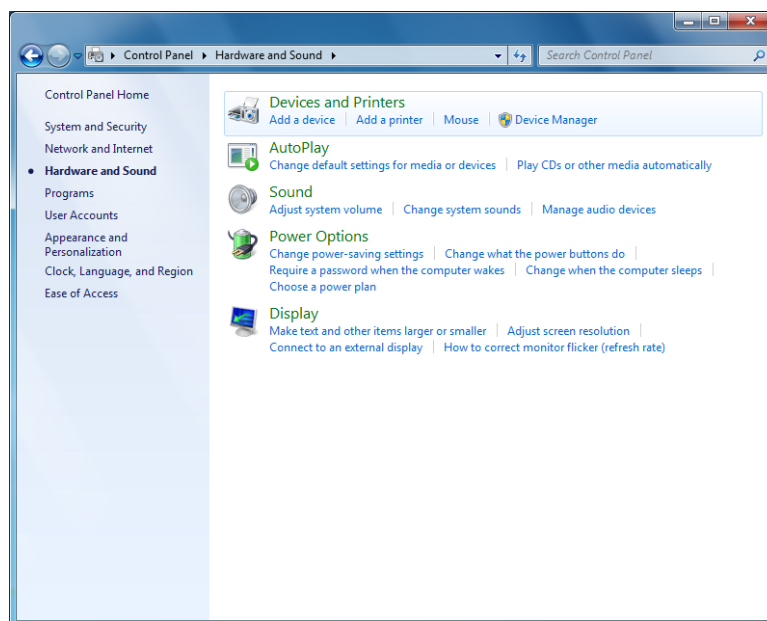
## 3.5 Installation under Windows 7

### 3.5.1 First software and board installation

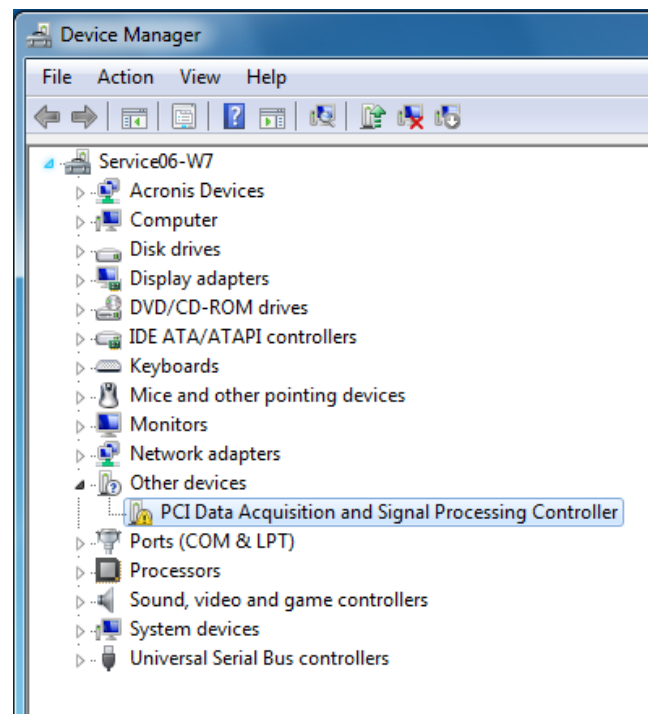
1. Switch off the PC.
2. Insert the board and fit the accessories.
3. Start up the PC and log in with administrator rights.
4. Click on "Start/Control Panel/Hardware and Sound".



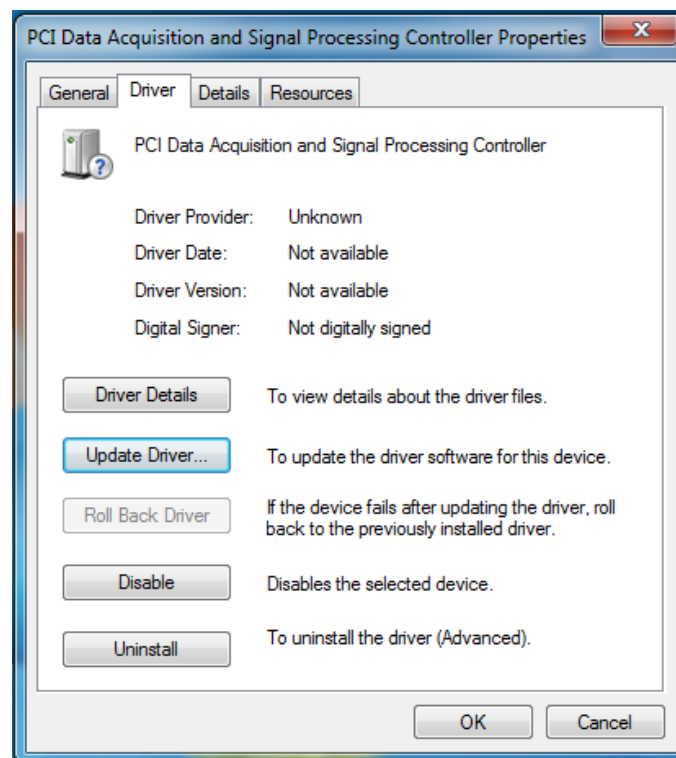
5. In the section "Devices and Printers", click on "Device Manager".



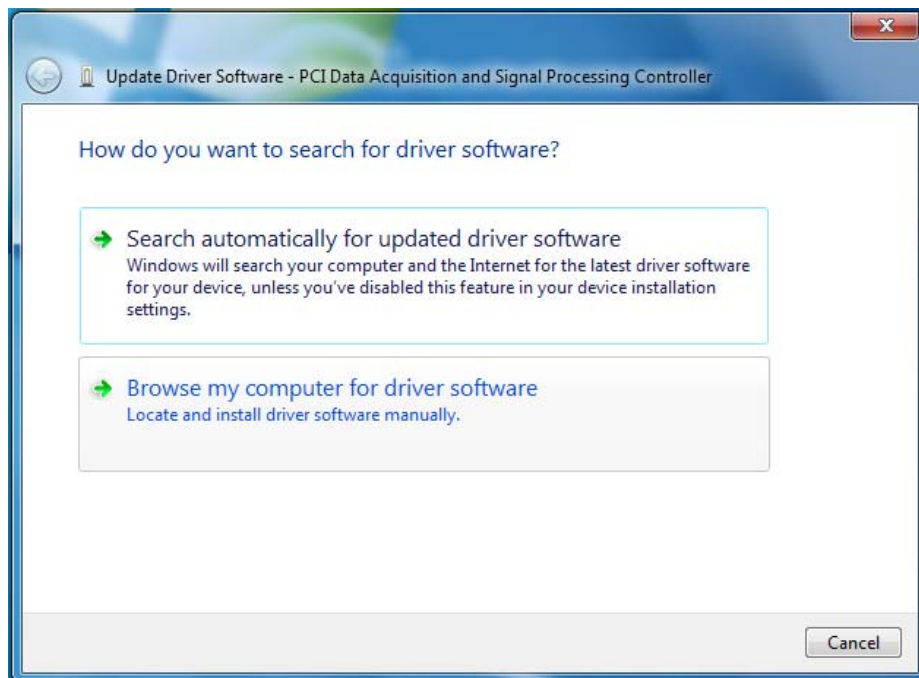
6. In the "Device Manager", double-click on "PCI Data Acquisition and Signal Processing Controller".



7. Select the tab "Driver" and click on the button "Update Driver...".



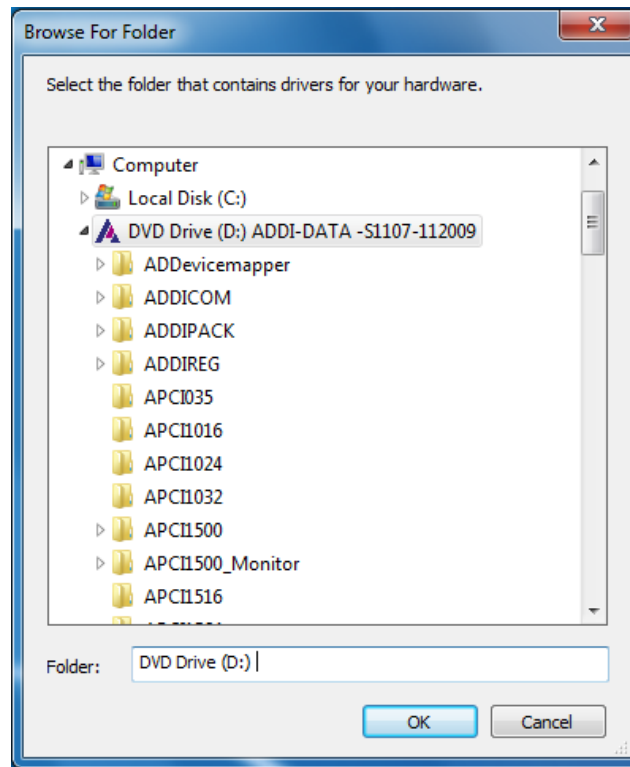
8. Click on the button "Browse my computer for driver software".



9. Click on "Browse".

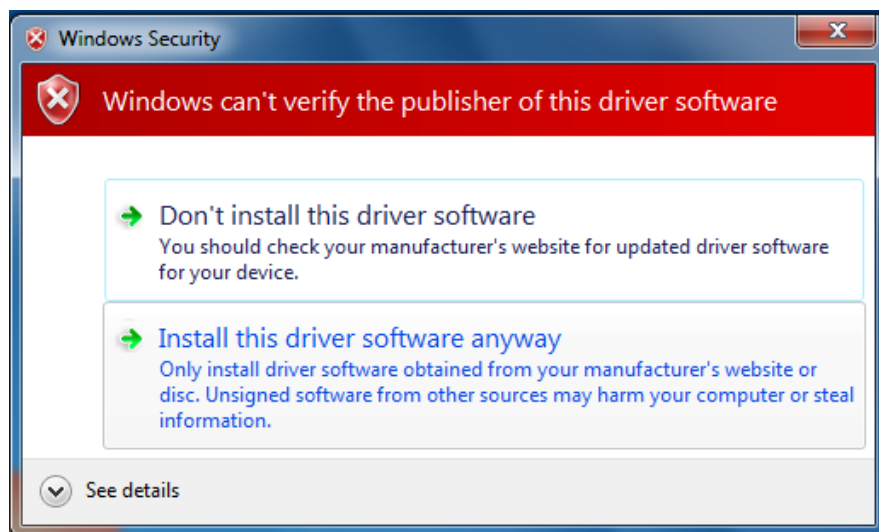


10. Insert CD 1 "ADDI-DATA Standard Drivers" into the CD drive.
11. The CD 1 browser interface is automatically displayed. Reduce its size if it overlaps the hardware wizard.
12. Select the drive that contains CD 1. Afterwards, click on "OK", and in the following window, click on "Next".



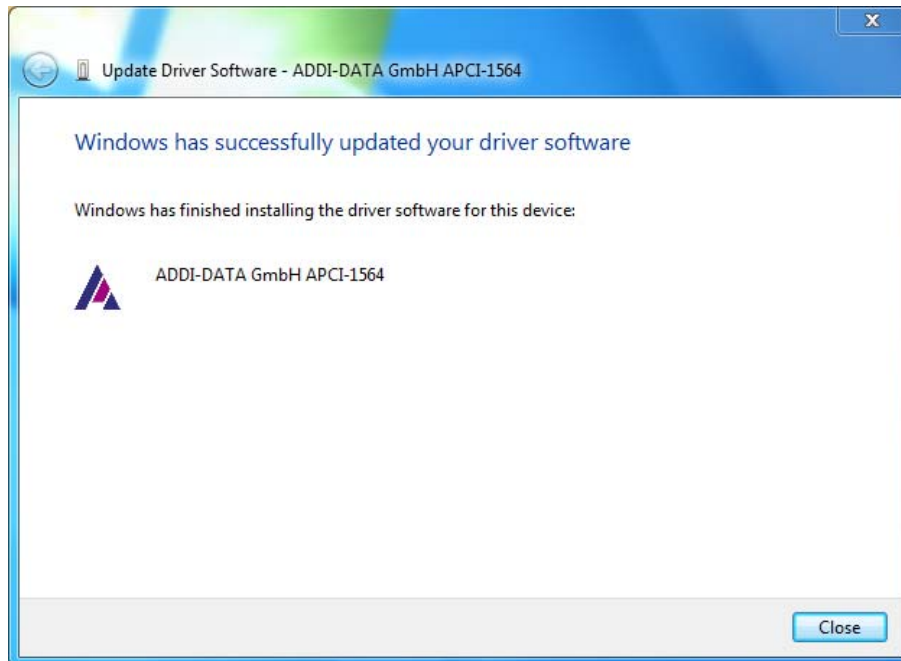
A Windows security warning is displayed.

13. Click on "Install this driver software anyway".



The installation of the driver software is finished.

**14.** Click on "Close".



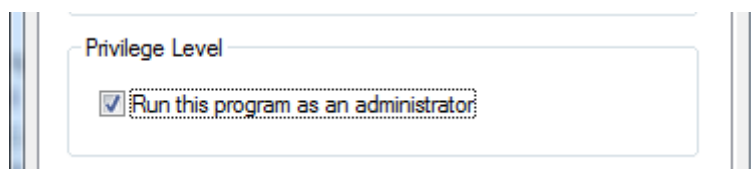
The installation program "InstallShield Wizard" automatically opens to install the ADDIPACK software.

**15.** Follow steps 10 to 18 in Chapter 3.4.1.

The installation is finished. The board is ready for operation.

**Optional:** Installation of the ADDEVICE MAPPER

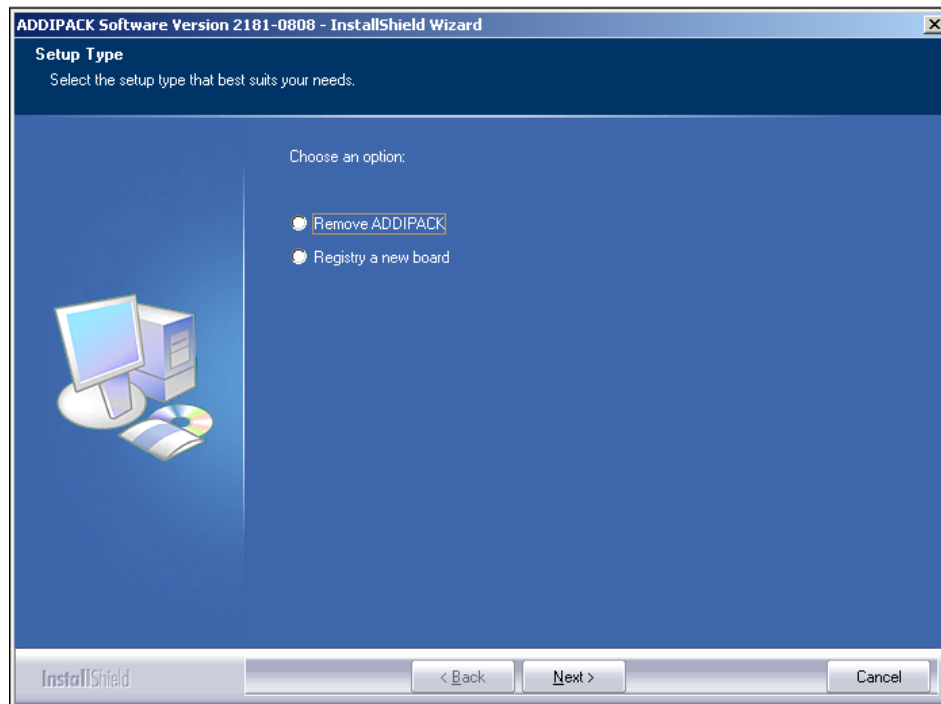
1. Install the ADDEVICE MAPPER program (see Chapter 3.6.2).
2. **Important:** Before starting the ADDEVICE MAPPER, perform the following steps: In the Windows Explorer, open the folder "C:\Windows". Right-click on the file "ADDeviceMapper.exe" and select "Properties". On the tab "Compatibility", in the section "Privilege Level", select the check box "Run this program as an administrator".



3. If desired, you can install the samples now (see Chapter 3.6.3).

### 3.5.2 Installation of further ADDIPACK boards

1. Switch off the PC.
2. Insert another board and fit the accessories.
3. Start up the PC and log in with administrator rights.  
CD 1 "ADDI-DATA Standard Drivers" must be inserted in the CD drive.
4. In the "InstallShield Wizard" program, select the option "Register a new board".



The board is automatically registered.

5. Follow the program instructions.
  6. In the window "ADDIDriver board clear/insert list", click on "OK".
- The installation is finished. The board is ready for operation.

## 3.6 Tool installation

### 3.6.1 Manual ADDIPACK installation

1. Insert CD 1 "ADDI-DATA Standard Drivers" into the CD drive.
2. The CD 1 browser interface is automatically displayed. If not, open the Windows Explorer, select the CD 1 drive and open the file "AD-Drivers.exe".
3. On the CD 1 homepage, in the menu bar above, select the item "Tools" and click on "ADDIPACK".
4. Follow the instructions of the installation program.
5. In the "Reboot" window, use the default "Yes, I want to restart my computer now." and click on "Finish".

### 3.6.2 Manual ADDEVICE MAPPER installation (optional)

1. Insert CD 1 "ADDI-DATA Standard Drivers" into the CD drive.
2. The CD 1 browser interface is automatically displayed. If not, open the Windows Explorer, select the CD 1 drive and open the file "AD-Drivers.exe".
3. On the CD 1 homepage, in the menu bar above, select the item "Tools" and click on "ADDEVICE MAPPER".
4. Follow the instructions of the installation program.

### 3.6.3 Sample installation

1. Insert CD 1 "ADDI-DATA Standard Drivers" into the CD drive.
2. The CD 1 browser interface is automatically displayed. If not, open the Windows Explorer, select the CD 1 drive and open the file "AD-Drivers.exe".
3. On the CD 1 homepage, click on the desired language.
4. From the left-hand side menu, select the applied bus type (e.g. PCI).
5. Click on the name of your board and then on the respective operating system. For each function of the board, you can now select the requested programming environment.
6. Follow the instructions of the installation program.



## 4 Installation of ADDIREG boards

### 4.1 Installation of ADDIREG boards (PCI/PCIe)

#### 4.1.1 Board list

**Table 4-1: ADDIREG board list (PCI/PCIe)**

<b>Board</b>	<b>Description</b>
<b>APCI-1500</b>	Digital I/O board, optically isolated, 32 digital inputs and outputs, 24 V, PCI bus
<b>APCI-1710</b>	Multifunction counter board, optically isolated, encoder, incremental counter, timer/counter, SSI, PWM, etc., PCI bus
<b>APCI-3001</b>	Analog input board, optically isolated, 16/8/4 SE or 8/4 differential inputs, 12-bit, PCI bus
<b>APCI-3120</b>	Multifunction board, optically isolated, 16/8 SE or 8/4 differential inputs, 4/8 analog outputs, 16-bit, PCI bus
<b>APCI-3600</b>	Noise and vibration measurement board, optically isolated, multifunction board, 8 analog inputs, 24-bit, PCI bus
<b>APCIe-1711</b>	Multifunction counter board, optically isolated, encoder, incremental counter, timer/counter, SSI, etc., PCI Express bus
<b>CPCI-1500</b>	Digital I/O board, optically isolated, 32 digital inputs and outputs, 24 V, CompactPCI bus
<b>CPCI-1710</b>	Multifunction counter board, optically isolated, encoder, incremental counter, timer/counter, SSI, PWM, etc., CompactPCI bus
<b>CPCI-1711</b>	Multifunction counter board, optically isolated, encoder, incremental counter, timer/counter, SSI, PWM, etc., CompactPCI bus
<b>CPCI-3001</b>	Analog input board, optically isolated, 16 SE or 8 diff. inputs, 12-bit, CompactPCI bus
<b>CPCI-3009</b>	Multifunction board, optically isolated, 16 SE or 8 diff. inputs, 4 analog outputs, 16-bit, CompactPCI bus
<b>CPCI-3120</b>	Multifunction board, optically isolated, 16 SE or 8 diff. inputs, 8 analog outputs, 16-bit, CompactPCI bus

### 4.1.2 Supplied software

A driver CD (CD 1) is supplied with each board.

The CD contains:

- the ADDIREG configuration program for Windows XP/2000/Vista (32-bit)/7
- standard software drivers for ADDI-DATA boards
- specific program tools, for example:
  - the program SET1710 for configuring the function modules of the boards APCI-1710 and CPCI-1710
  - all functions that are implemented for the counter board
  - the ADDIMON testing program for the boards APCI-1500, APCI-3001, APCI-3120
- samples.

### 4.1.3 Installation under Windows XP/2000

1. Switch off the PC.
2. Insert the board and fit the accessories.
3. Start up the PC and log in with administrator rights.
4. The hardware wizard opens to install the INF files and the driver. Select the option "No, not this time".
5. Insert CD 1 "ADDI-DATA Standard Drivers" into the CD drive.
6. The CD 1 browser interface is automatically displayed. Reduce its size if it overlaps the hardware wizard.
7. Follow the instructions of the hardware wizard until the board is completely installed.
8. Click on "Finish".
9. Install the configuration program ADDIREG manually from CD 1 (see Chapter 4.3.1).

If ADDIREG is already installed on the PC, you have two options:

- a) Uninstall ADDIREG (see Chapter 7.1.1) and install the latest ADDIREG version manually from CD 1 (see Chapter 4.3.1). Afterwards, continue with step 10.
- b) Click on "Cancel" to stop the installation process and continue with step 10.

**10. Register the board in ADDIREG:**

Open the ADDIREG program via "Start/All Programs/ADDIREG". Add your board by clicking on "Insert" and register it by clicking on the buttons "Set" and "Save".

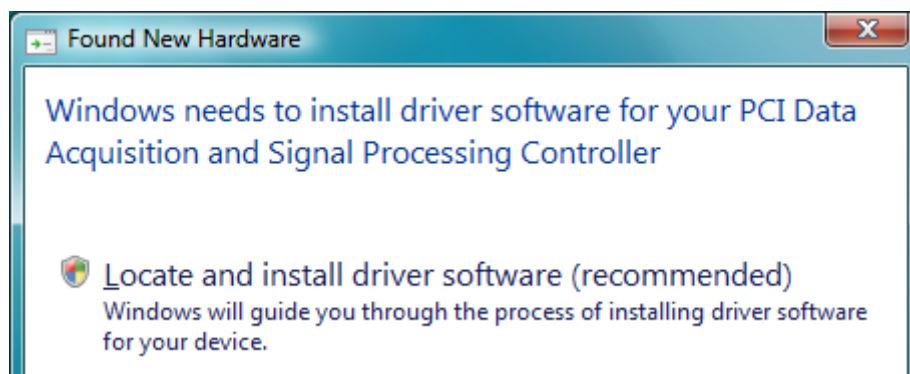
For more detailed information on the ADDIREG program and the board registration, see the Technical Description of your board.

11. Close ADDIREG by clicking on "Quit".
  12. To install the driver, on the CD 1 homepage, in the menu bar above, click on "Drivers and samples" and select the board whose driver you wish to install. Click on the requested operating system and then on the link "Driver (Standard)".
  13. Follow the instructions of the installation program.
- The installation is finished. The board is ready for operation.  
Further ADDIREG boards are installed in the same way (steps 1-13).

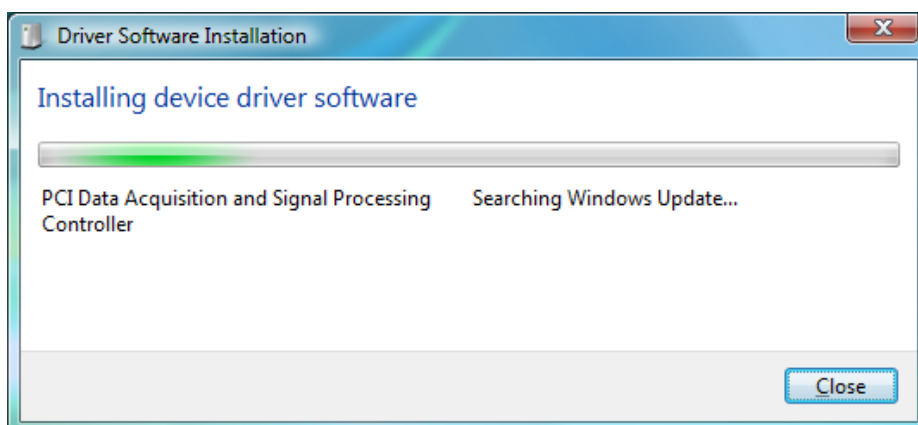
#### 4.1.4 Installation under Windows Vista (32-bit)

##### First software and board installation

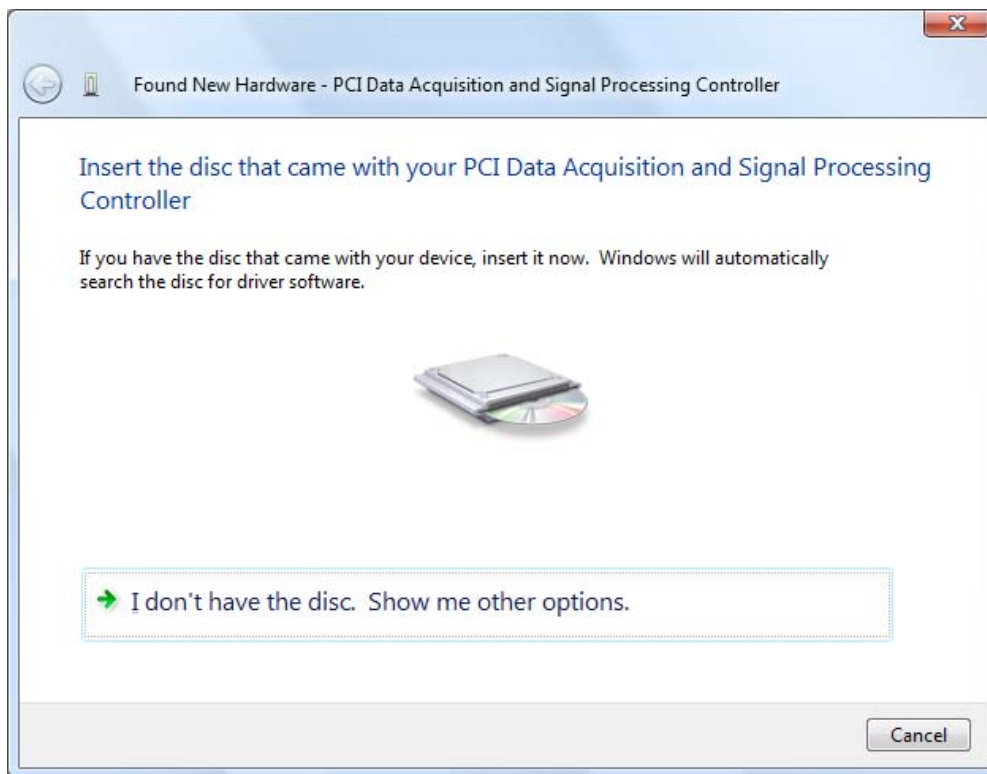
1. Switch off the PC.
2. Insert the board and fit the accessories.
3. Start up the PC and log in with administrator rights.
4. The window "Found New Hardware" (hardware wizard) is displayed. Click on "Locate and install driver software (recommended)".



5. Follow the program instructions until the window below opens.

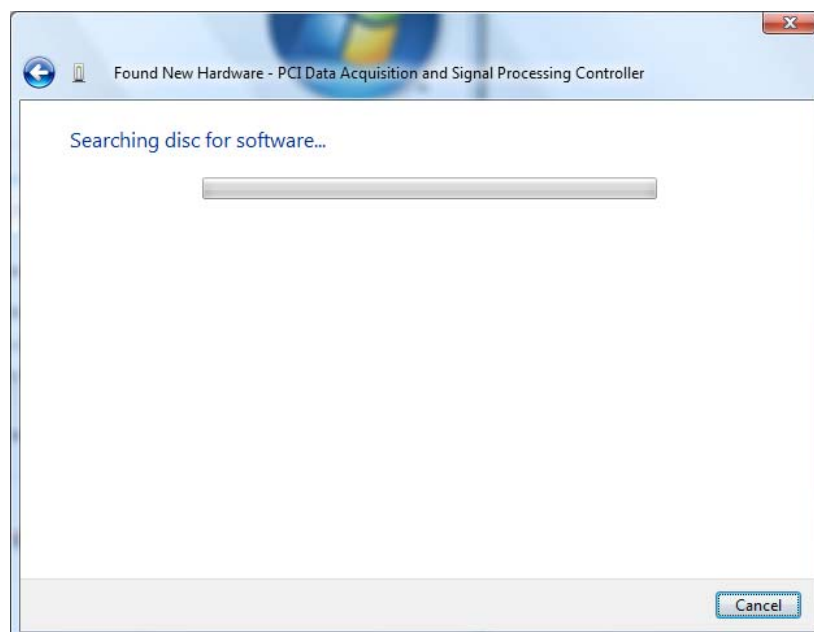


The following window is automatically displayed:



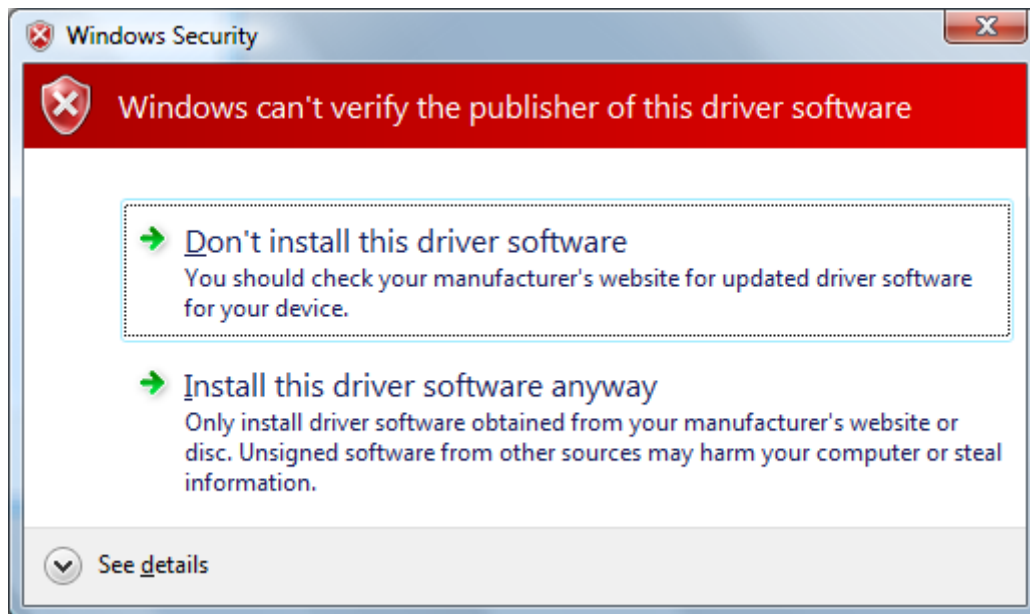
The installation of the device driver software takes some time.

- 6.** In the meantime, insert CD 1 "ADDI-DATA Standard Drivers" into the CD drive.
- 7.** In case the CD 1 browser interface opens, reduce its size if it overlaps the hardware wizard.

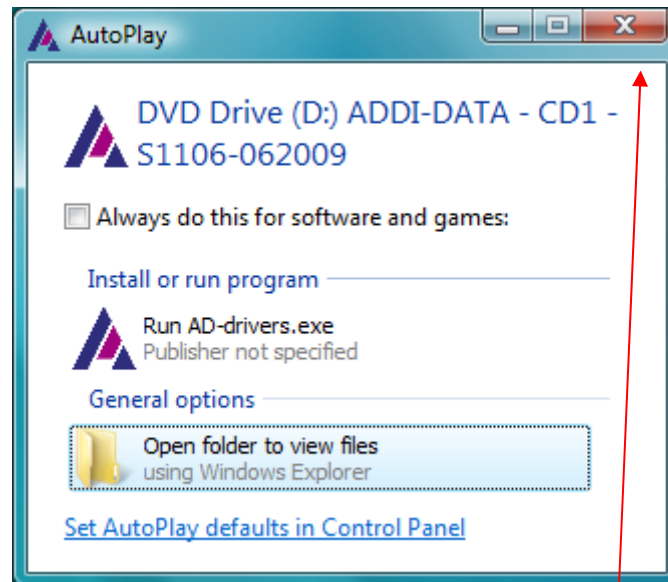


A Windows security warning is displayed.

8. Click on "Install this driver software anyway".

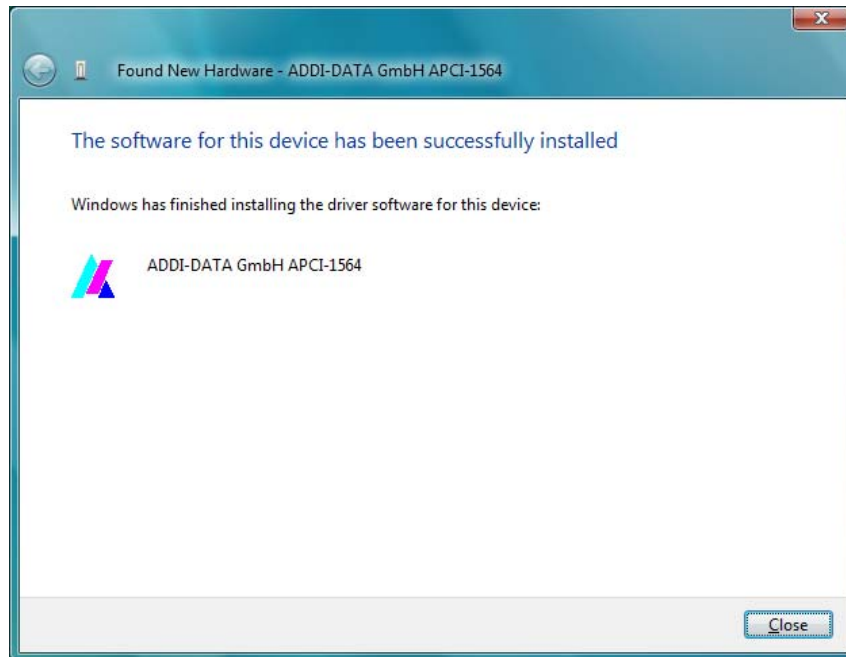


Depending on the Windows setting, the following window might be displayed:



9. Close this window by clicking on the button indicated above.

The installation of the driver software is finished.

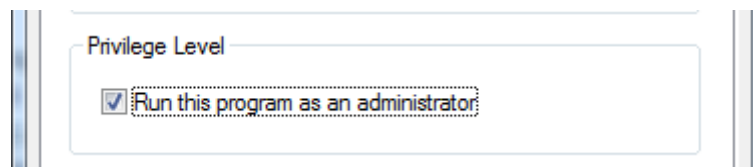


- 10.** Install the configuration program ADDIREG manually from CD 1 (see Chapter 4.3.1).

If ADDIREG is already installed on the PC, you have two options:

- a) Uninstall ADDIREG (see Chapter 7.1.1) and install the latest ADDIREG version manually from CD 1 (see Chapter 4.3.1). Afterwards, continue with step 11.
- b) Click on "Cancel" to stop the installation process and continue with step 11.

- 11.** Before starting ADDIREG, the program has to be provided with administrator rights: In the Windows Explorer, open the folder "C:\Windows". Right-click on the file "ADDIREG.exe" and select "Properties". On the tab "Compatibility", in the section "Privilege Level", select the check box "Run this program as an administrator".



- 12.** Register the board in ADDIREG:

Open the ADDIREG program via "Start/All Programs/ADDIREG". Add your board by clicking on "Insert" and register it by clicking on the buttons "Set" and "Save".

For more detailed information on the ADDIREG program and the board registration, see the Technical Description of your board.

- 13.** Close ADDIREG by clicking on "Quit".
  - 14.** To install the driver, on the CD 1 homepage, in the menu bar above, click on "Drivers and samples" and select the board whose driver you wish to install. Click on the requested operating system and then on the link "Driver (Standard)".
  - 15.** Follow the instructions of the installation program.
- The installation is finished. The board is ready for operation.

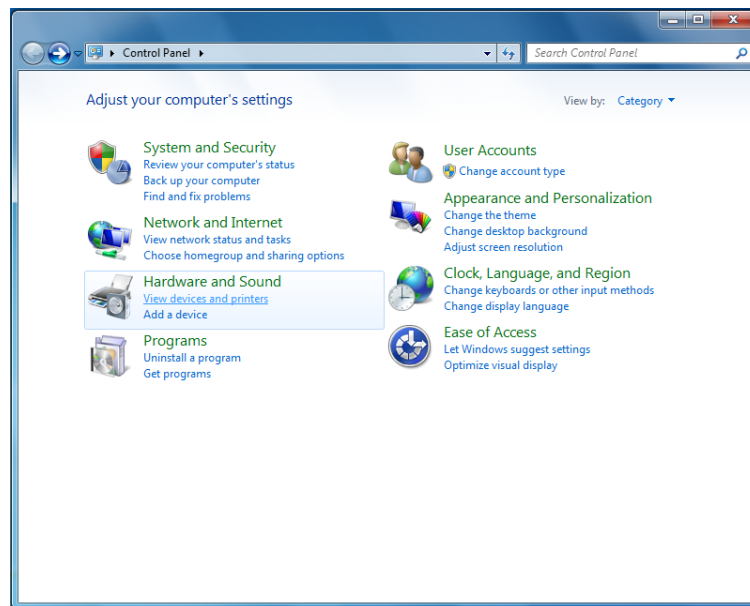
### **Installation of further ADDIREG boards**

- 1.** Switch off the PC.
  - 2.** Insert another board and fit the accessories.
  - 3.** Start up the PC and log in with administrator rights.
- As the PC recognises those boards, the installation runs automatically.
- 4.** Reboot the PC.
  - 5.** Register the board in ADDIREG:  
Open the ADDIREG program via "Start/All Programs/ADDIREG". Add your board by clicking on "Insert" and register it by clicking on the buttons "Set" and "Save".
- For more detailed information on the ADDIREG program and the board registration, see the Technical Description of your board.
- 6.** Close ADDIREG by clicking on "Quit".
  - 7.** Insert CD 1 "ADDI-DATA Standard Drivers" into the CD drive.
  - 8.** The CD 1 browser interface is automatically displayed. If not, open the Windows Explorer, select the CD 1 drive and open the file "AD-Drivers.exe".
  - 9.** To install the driver, on the CD 1 homepage, in the menu bar above, click on "Drivers and samples" and select the board whose driver you wish to install. Click on the requested operating system and then on the link "Driver (Standard)".
  - 10.** Follow the instructions of the installation program.
- The installation is finished. The board is ready for operation.

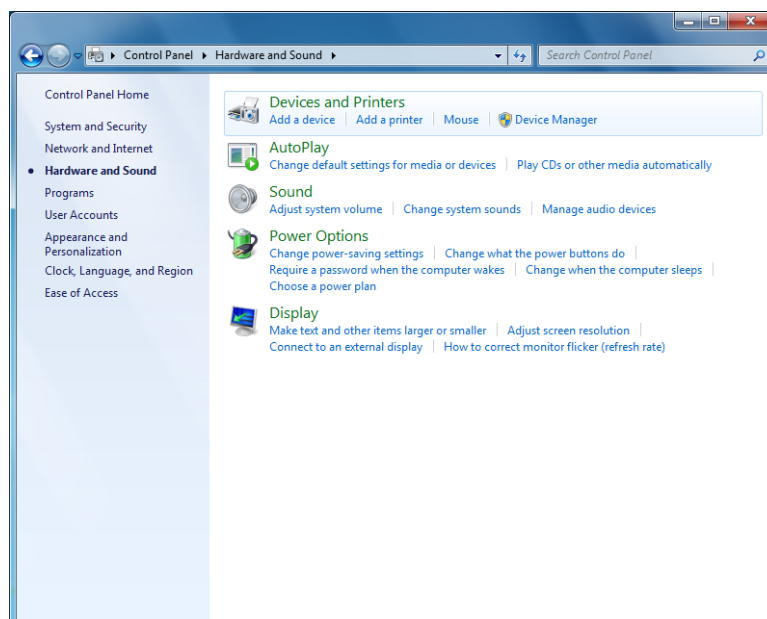
## 4.1.5 Installation under Windows 7

### First software and board installation

1. Switch off the PC.
2. Insert the board and fit the accessories.
3. Start up the PC and log in with administrator rights.
4. Click on "Start/Control Panel/Hardware and Sound".

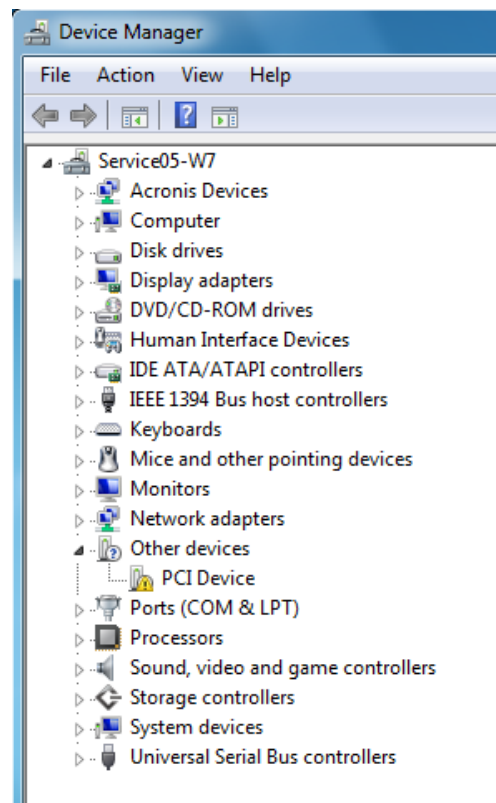


5. In the section "Devices and Printers", click on "Device Manager".

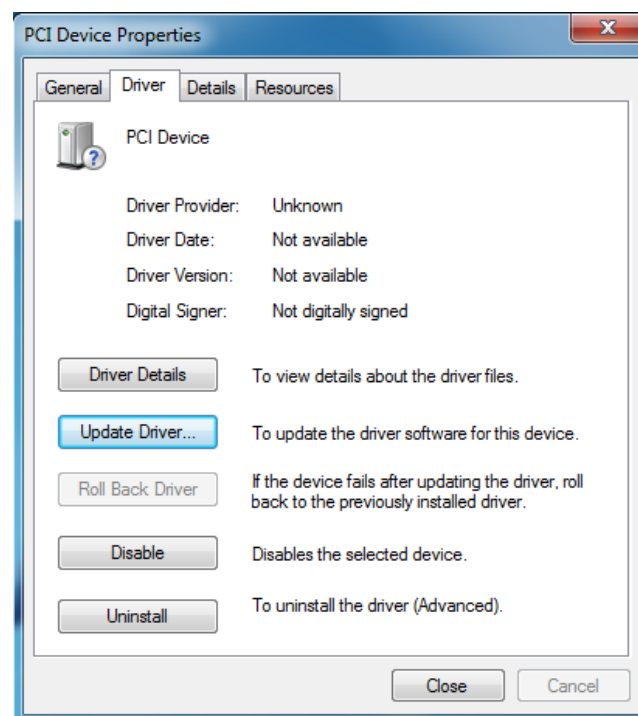




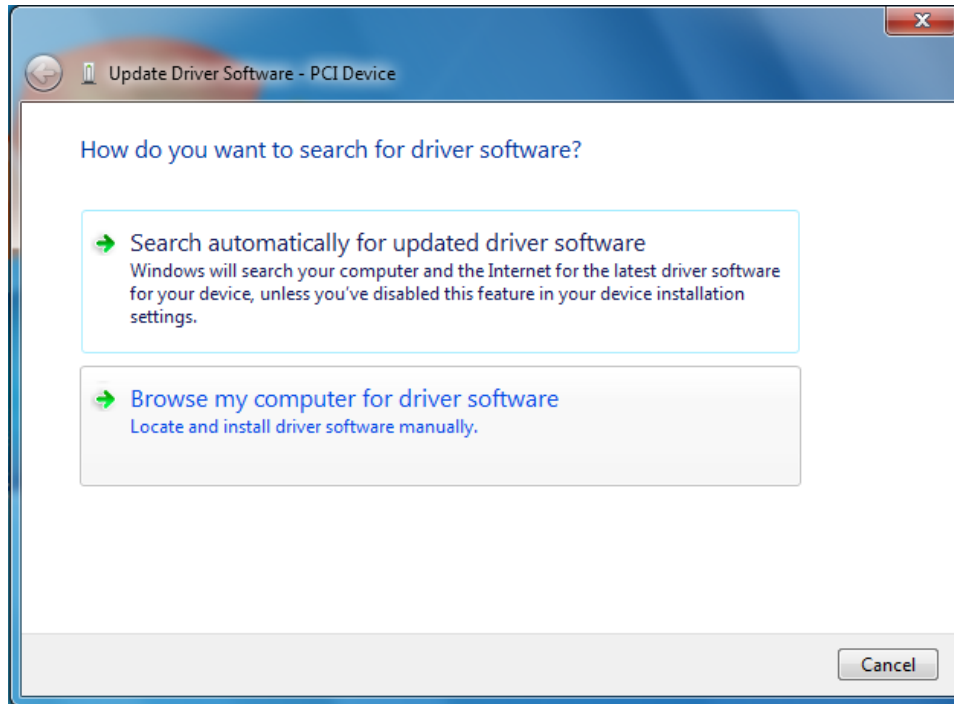
6. In the “Device Manager”, double-click on “PCI Device”.



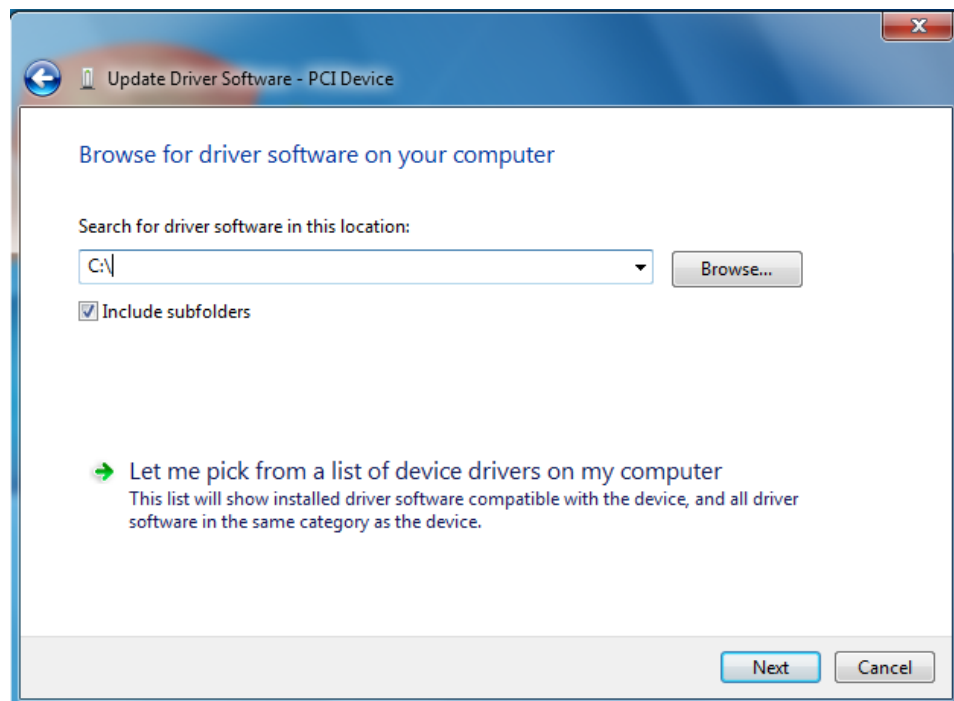
7. Select the tab “Driver” and click on the button “Update Driver...”.



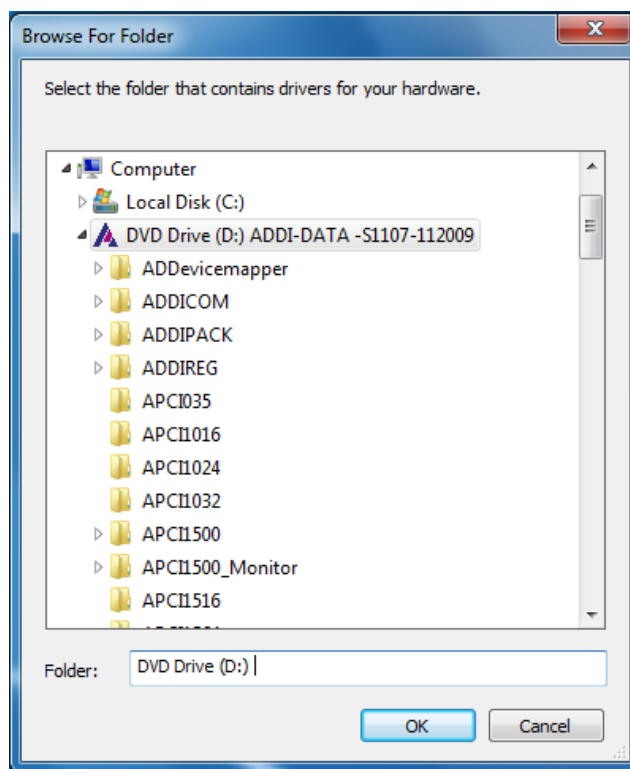
8. Click on the button "Browse my computer for driver software".



9. Click on "Browse".

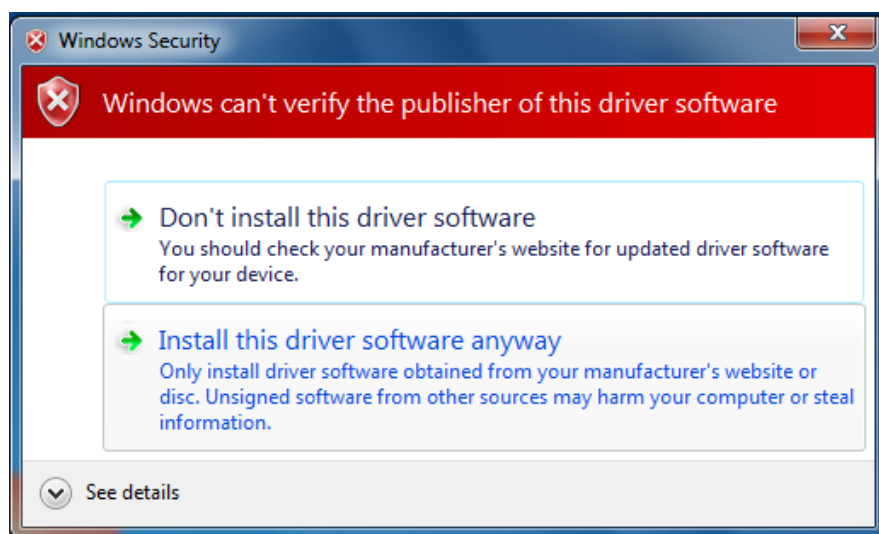


10. Insert CD 1 "ADDI-DATA Standard Drivers" into the CD drive.
11. The CD 1 browser interface is automatically displayed. Reduce its size if it overlaps the hardware wizard.
12. Select the drive that contains CD 1. Afterwards, click on "OK", and in the following window, click on "Next".

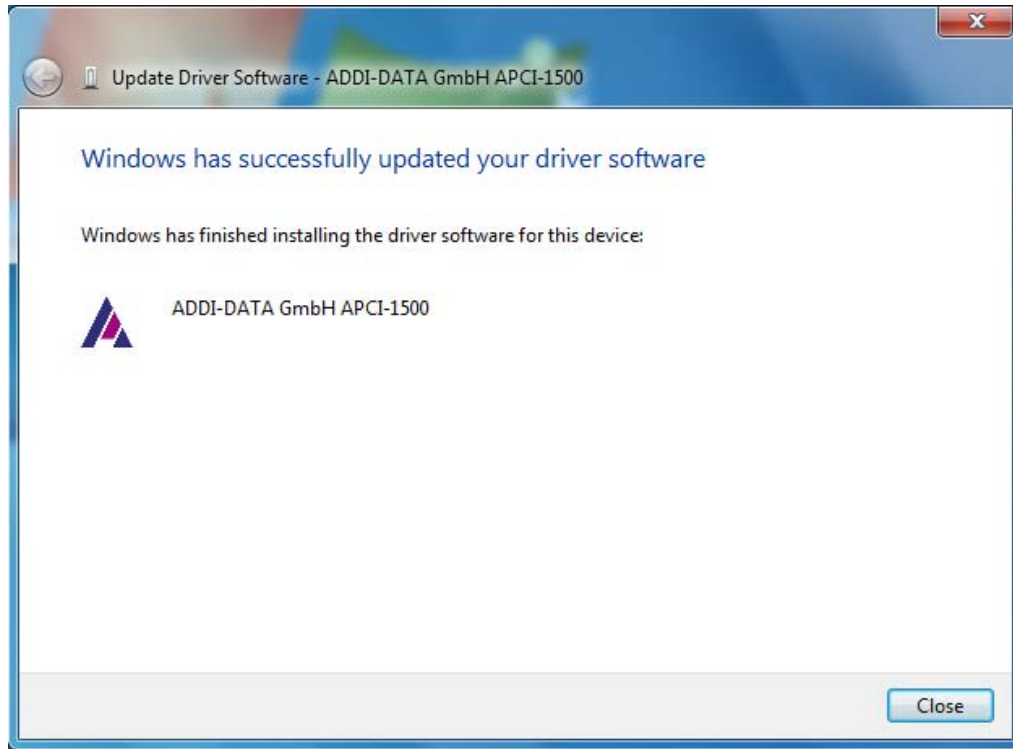


A Windows security warning is displayed.

13. Click on "Install this driver software anyway".



The installation of the driver software is finished.



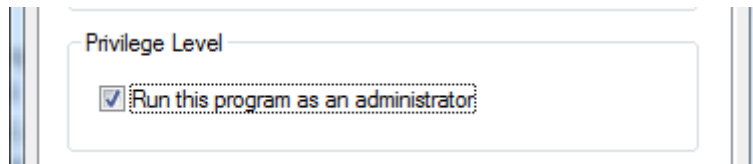
**14.** Close all the windows that are open.

**15.** Install the configuration program ADDIREG manually from CD 1 (see Chapter 4.3.1).

If ADDIREG is already installed on the PC, you have two options:

- c) Uninstall ADDIREG (see Chapter 7.1.1) and install the latest ADDIREG version manually from CD 1 (see Chapter 4.3.1). Afterwards, continue with step 16.
- d) Click on "Cancel" to stop the installation process and continue with step 16.

**16.** Before starting ADDIREG, the program has to be provided with administrator rights: In the Windows Explorer, open the folder "C:\Windows". Right-click on the file "ADDIREG.exe" and select "Properties". On the tab "Compatibility", in the section "Privilege Level", select the check box "Run this program as an administrator".



**17. Register the board in ADDIREG:**

Open the ADDIREG program via "Start/All Programs/ADDIREG". Add your board by clicking on "Insert" and register it by clicking on the buttons "Set" and "Save".

For more detailed information on the ADDIREG program and the board registration, see the Technical Description of your board.

**18. Close ADDIREG by clicking on "Quit".****19. To install the driver, on the CD 1 homepage, in the menu bar above, click on "Drivers and samples" and select the board whose driver you wish to install.**

Click on the requested operating system and then on the link "Driver (Standard)".

**20. Follow the instructions of the installation program.**

The installation is finished. The board is ready for operation.

**Installation of further ADDIREG boards**

- 1.** Switch off the PC.
- 2.** Insert another board and fit the accessories.
- 3.** Start up the PC and log in with administrator rights.
- 4.** Repeat steps 4 to 14 of the first software and board installation in this chapter.
- 5.** Afterwards, repeat steps 17 to 20.

The installation is finished. The board is ready for operation.

**4.1.6 Installation of 16-bit drivers****IMPORTANT!**

The MS-DOS driver is only supplied on request.

Please contact our service line for more information:

Tel: +49 7229 1847-0.

## 4.2 Installation of ADDIREG boards (ISA)

### 4.2.1 Board list

**Table 4-2: ADDIREG board list (ISA)**

<b>Board</b>	<b>Description</b>
<b>PA 302</b>	Analog input board, 16/8 SE or 8/4 diff. inputs, 12-bit, ISA bus
<b>PA 311</b>	Multifunction board, 16 SE or 8 diff. inputs, 8/4/2 analog outputs, 16-bit, ISA bus
<b>PA 1000</b>	Digital input board, optically isolated, 32 digital inputs, 24 V, ISA bus
<b>PA 1500</b>	Digital I/O board, optically isolated, 16 digital inputs and outputs, 24 V, ISA bus
<b>PA 1508</b>	Digital I/O board, optically isolated, 16 digital inputs and outputs, 24 V, ISA bus
<b>PA 1700-2</b>	Pulse counter board for 3 or 6 incremental signal generators, ISA bus
<b>PA 2000</b>	Digital output board, optically isolated, 32 digital outputs, 24 V, ISA bus

### 4.2.2 Supplied software

A driver CD (CD 1) is supplied with each board.

The CD contains:

- the ADDIREG configuration program for Windows XP/2000
- standard software drivers for ADDI-DATA boards
- the ADDIMON testing program for the board PA 1500
- samples.

### 4.2.3 Installation under Windows XP/2000

1. Switch off the PC.
2. Check if the preset base address (see Technical Description of the respective board) on your PC is free.  
For this, open the "Device Manager" via "Start/Control Panel/System/Hardware". In the menu bar, click on "View" and select the option "Resources by type". If the preset base address for your board is not displayed, it is free. Otherwise, you should set a new base address by means of the DIP switch. For more detailed information on this, see the Technical Description of your board.
3. Select a free interrupt line and configure it, if required, by setting jumpers (see Technical Description of the respective board).
4. Fit the accessories.
5. Start up the PC and log in with administrator rights.
6. Insert CD 1 "ADDI-DATA Standard Drivers" into the CD drive.
7. The CD 1 browser interface is automatically displayed. If not, open the Windows Explorer, select the CD 1 drive and open the file "AD-Drivers.exe".
8. Install the configuration program ADDIREG manually from CD 1 (see Chapter 4.3.1).

If ADDIREG is already installed on the PC, you have two options:

- a) Uninstall ADDIREG (see Chapter 7.1.1) and install the latest ADDIREG version manually from CD 1 (see Chapter 4.3.1). Afterwards, continue with step 9.
  - b) Click on "Cancel" to stop the installation process and continue with step 9.
9. Register the board in ADDIREG:  
Open the ADDIREG program via "Start/All Programs/ADDIREG". Add your board by clicking on "Insert". From the list field "Address", select the base address of your board, and from the field to its right, select the interrupt. Register the board by clicking on the buttons "Set" and "Save".

For more detailed information on the ADDIREG program and the board registration, see the Technical Description of your board.

10. Close ADDIREG by clicking on "Quit".
11. To install the driver, on the CD 1 homepage, in the menu bar above, click on "Drivers and samples" and select the board whose driver you wish to install. Click on the requested operating system and then on the link "Driver (Standard)".
12. Follow the instructions of the installation program.

The installation is finished. The board is ready for operation.

Further ADDIREG boards are installed in the same way (steps 1-12).

#### 4.2.4 Installation of 16-bit drivers



### **IMPORTANT!**

The MS-DOS driver is only supplied on request.

Please contact our service line for more information:

Tel: +49 7229 1847-0.

### 4.3 Tool installation

#### 4.3.1 Manual ADDIREG installation

1. Insert CD 1 "ADDI-DATA Standard Drivers" into the CD drive.
2. The CD 1 browser interface is automatically displayed. If not, open the Windows Explorer, select the CD 1 drive and open the file "AD-Drivers.exe".
3. On the CD 1 homepage, in the menu bar above, select the item "Tools" and click on "ADDIREG".
4. Follow the instructions of the installation program.
5. In the "Reboot" window, use the default "Yes, I want to restart my computer now." and click on "Finish".

#### 4.3.2 Sample installation

1. Insert CD 1 "ADDI-DATA Standard Drivers" into the CD drive.
2. The CD 1 browser interface is automatically displayed. If not, open the Windows Explorer, select the CD 1 drive and open the file "AD-Drivers.exe".
3. On the CD 1 homepage, click on the desired language.
4. From the left-hand side menu, select the applied bus type (e.g. PCI).
5. Click on the name of your board and then on the respective operating system. For each function of the board, you can now select the requested programming environment.
6. Follow the instructions of the installation program.



## 5 Installation without ADDIPACK or ADDIREG

### 5.1 Board list (PCI/PCIe)

**Table 5-1: List of boards without ADDIPACK or ADDIREG (PCI/PCIe)**

<b>Board</b>	<b>Description</b>
<b>APCI-7300-3</b>	1-port serial interface, RS232, RS422, RS485, 20 mA CL, modular mounting through modules
<b>APCI-7420-3</b>	2-port serial interface, RS232, RS422, RS485, 20 mA CL, modular mounting through modules
<b>APCI-7500-3</b>	4-port serial interface, RS232, RS422, RS485, 20 mA CL, modular mounting through modules
<b>APCI-7800-3</b>	8-port serial interface, RS232, RS422, RS485, 20 mA CL, modular mounting through modules
<b>APCIe-7300</b>	1-port serial interface, RS232, RS422, RS485, 20 mA CL, modular mounting through modules
<b>APCIe-7420</b>	2-port serial interface, RS232, RS422, RS485, 20 mA CL, modular mounting through modules
<b>APCIe-7500</b>	4-port serial interface, RS232, RS422, RS485, 20 mA CL, modular mounting through modules
<b>APCIe-7800</b>	8-port serial interface, RS232, RS422, RS485, 20 mA CL, modular mounting through modules
<b>CPCI-7500</b>	4-port serial interface, RS232, RS422, RS485, 20 mA CL, modular mounting through modules

### 5.2 Supplied software

A driver CD (CD 1) is supplied with each board.

The CD contains ADDICOM sample programs with Windows API functions for ADDI-DATA boards in 32-bit.

## 5.3 Installation under Windows XP/2000/Server 2003

### 5.3.1 First software and board installation

1. Switch off the PC.
2. Insert the board and fit the accessories.
3. Start up the PC and log in with administrator rights.
4. The hardware wizard opens to install the INF files and the driver. Select the option "No, not this time".
5. Insert CD 1 "ADDI-DATA Standard Drivers" into the CD drive.
6. The CD 1 browser interface is automatically displayed. Reduce its size if it overlaps the hardware wizard.
7. Follow the instructions of the hardware wizard.

For each board, several components have to be installed.



#### **IMPORTANT!**

The hardware wizard opens again to install the COM port.

8. Follow the instructions of the hardware wizard.
9. Close the window of the hardware wizard by clicking on "Finish".  
Further ports are now automatically installed by the hardware wizard.
10. Reboot the PC.

The installation is finished. The board is ready for operation.

In the "Device Manager" (via "Start/Control Panel/System/Hardware"), you can configure each interface according to your requirements (see Technical Description of your board).

### 5.3.2 Installation of further boards without ADDIPACK/ADDIREG

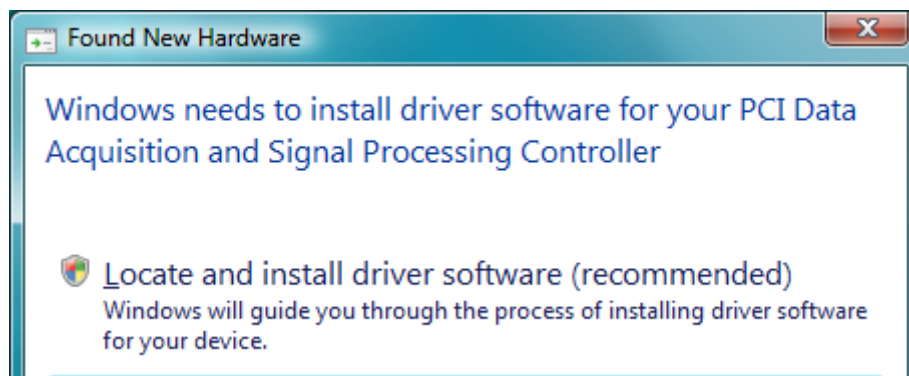
1. Repeat steps 1 to 3 in Chapter 5.3.1.  
CD 1 "ADDI-DATA Standard Drivers" must be inserted in the CD drive.  
As the PC recognises those boards, the installation runs automatically.
2. Reboot the PC.

The installation is finished. The board is ready for operation.

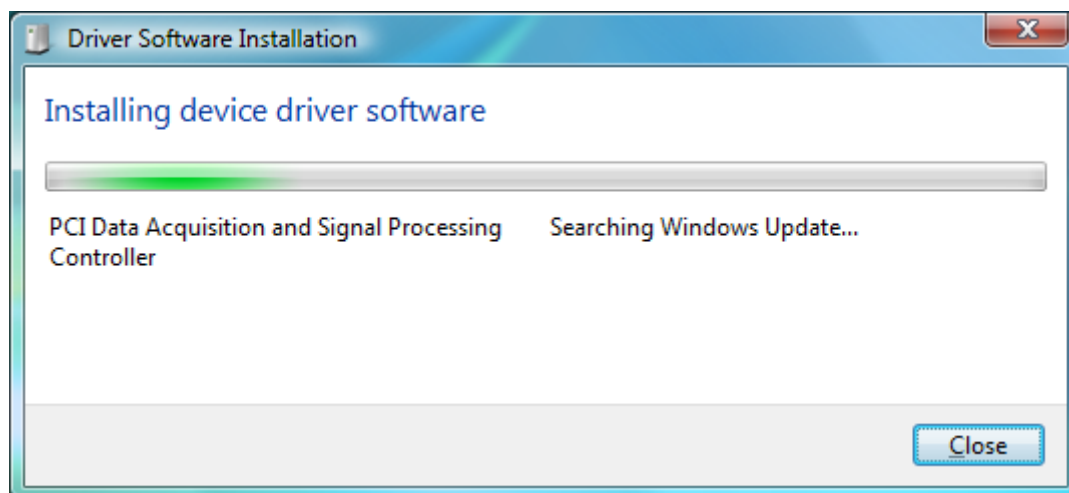
## 5.4 Installation under Windows Vista (32-bit)

### 5.4.1 First software and board installation

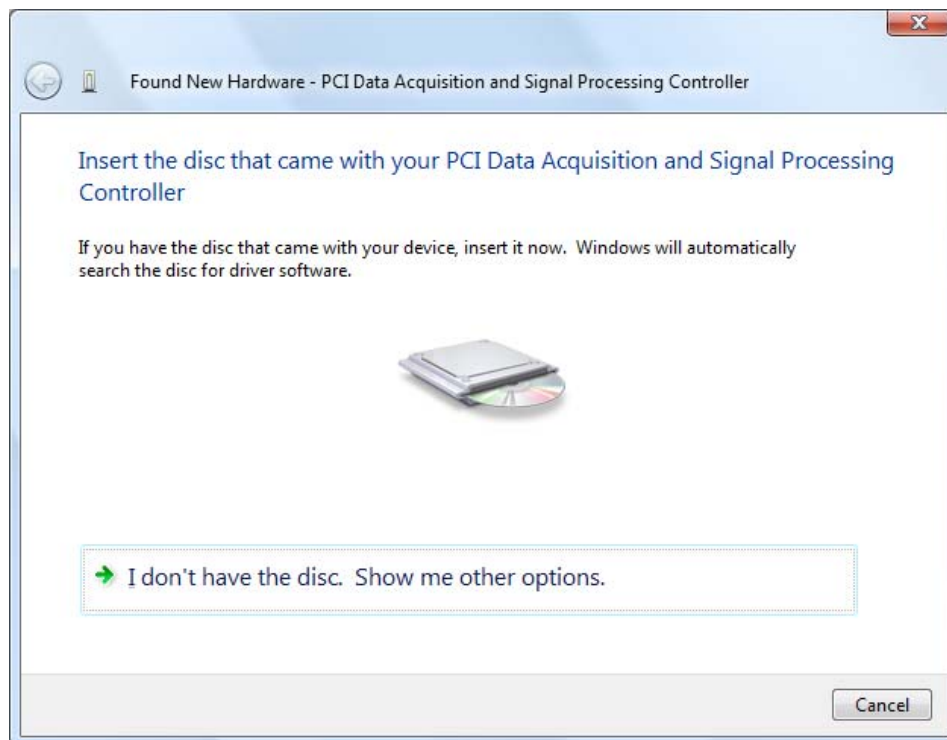
1. Switch off the PC.
2. Insert the board and fit the accessories.
3. Start up the PC and log in with administrator rights.
4. The window "Found New Hardware" (hardware wizard) is displayed. Click on "Locate and install driver software (recommended)".



5. Follow the program instructions until the window below opens.

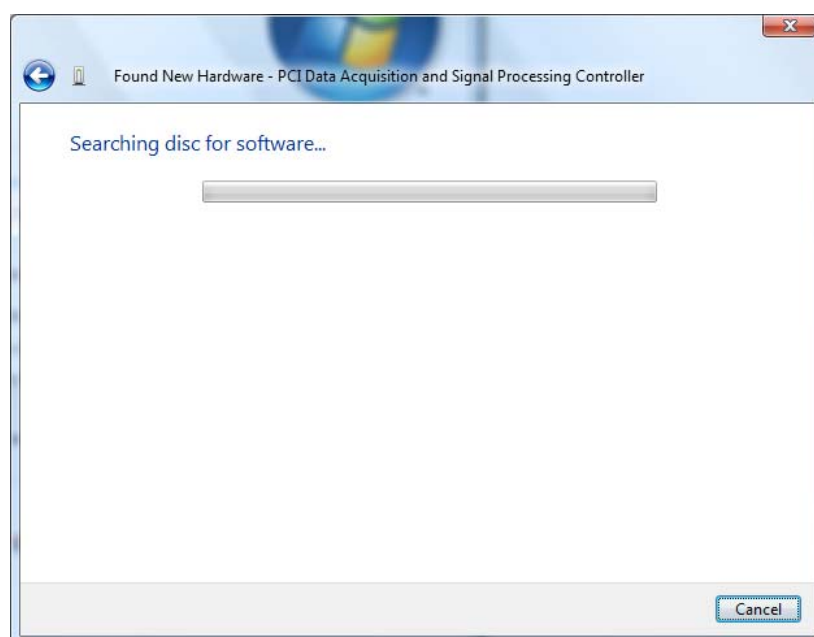


The following window is automatically displayed:



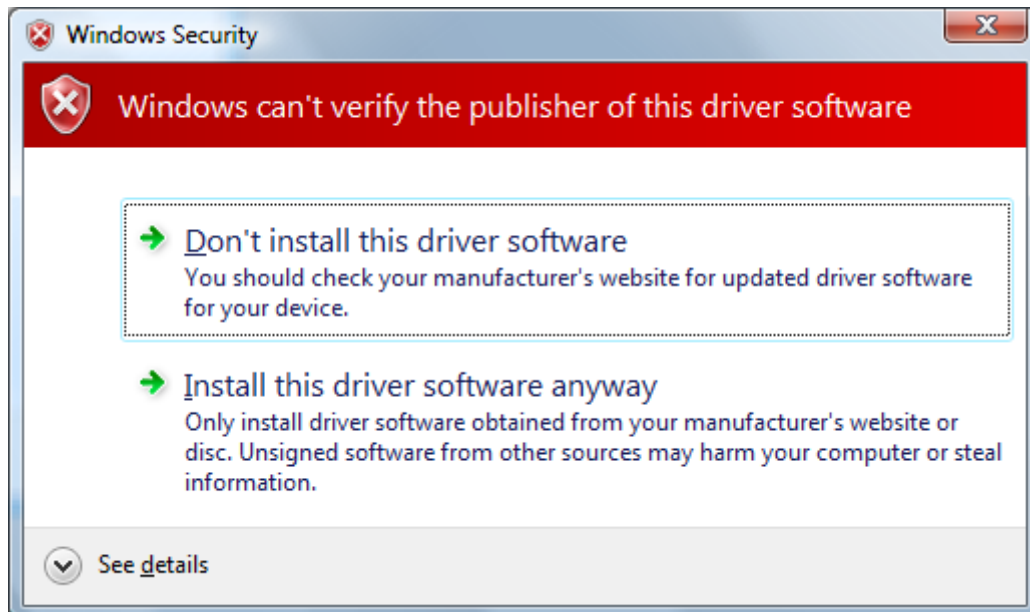
The installation of the device driver software takes some time.

- 6.** In the meantime, insert CD 1 "ADDI-DATA Standard Drivers" into the CD drive.
- 7.** In case the CD 1 browser interface opens, reduce its size if it overlaps the hardware wizard.

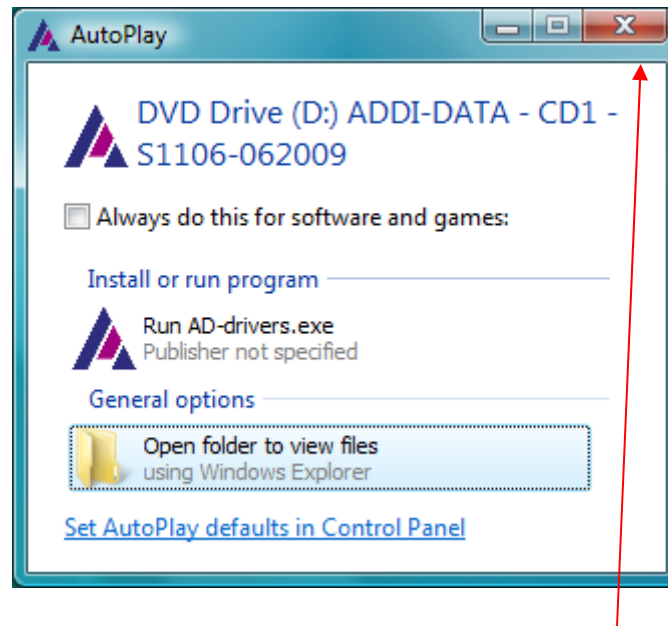


A Windows security warning is displayed.

8. Click on "Install this driver software anyway".

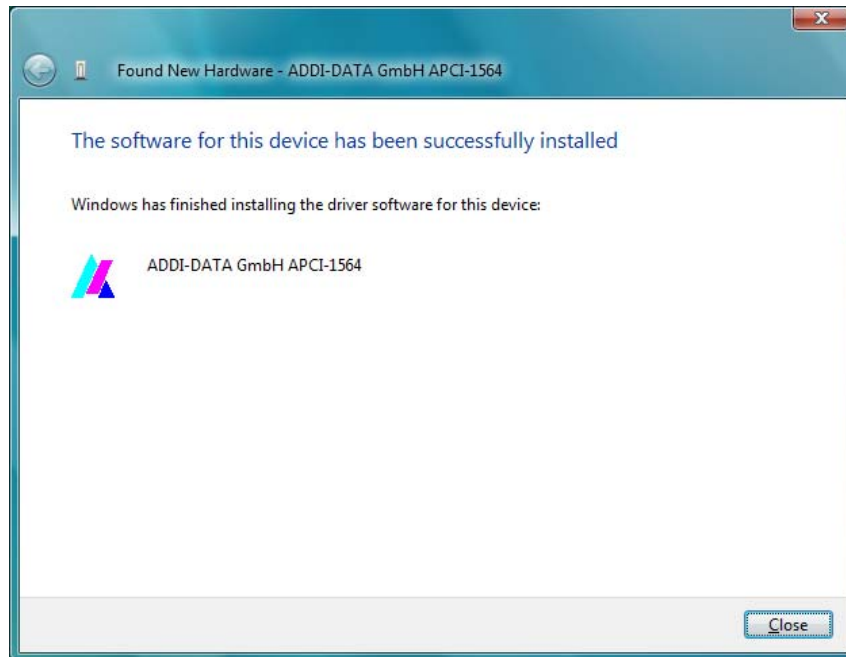


Depending on the Windows setting, the following window might be displayed:



9. Close this window by clicking on the button indicated above.

The installation of the driver software is finished.



For each board, several components have to be installed.



### IMPORTANT!

The hardware wizard opens again to install the COM port.

Further ports are now automatically installed by the hardware wizard.

#### 10. Reboot the PC.

The installation is finished. The board is ready for operation.

In the "Device Manager" (via "Start/Control Panel/System/Hardware"), you can configure each interface according to your requirements (see Technical Description of your board).

## 5.4.2 Installation of further boards without ADDIPACK/ADDIREG

### 1. Repeat steps 1 to 4 in Chapter 5.4.1.

CD 1 "ADDI-DATA Standard Drivers" must be inserted in the CD drive.

As the PC recognises those boards, the installation runs automatically.

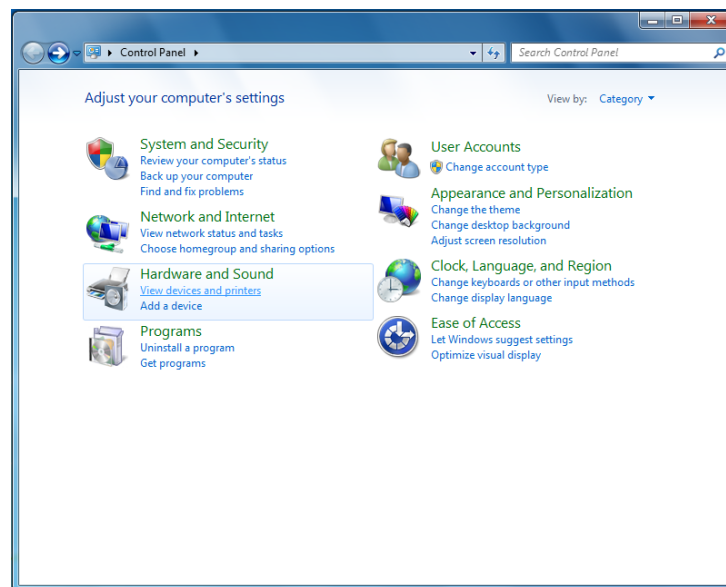
### 2. Reboot the PC.

The installation is finished. The board is ready for operation.

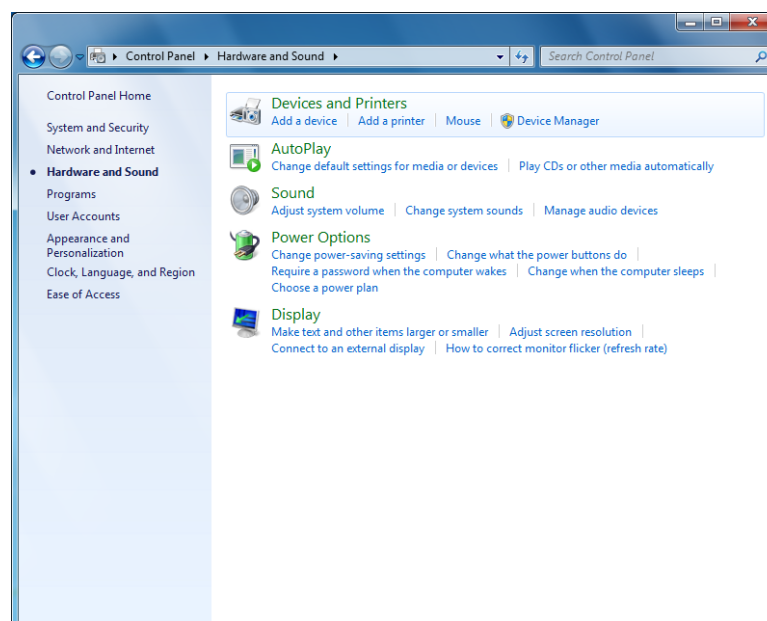
## 5.5 Installation under Windows 7

### 5.5.1 First software and board installation

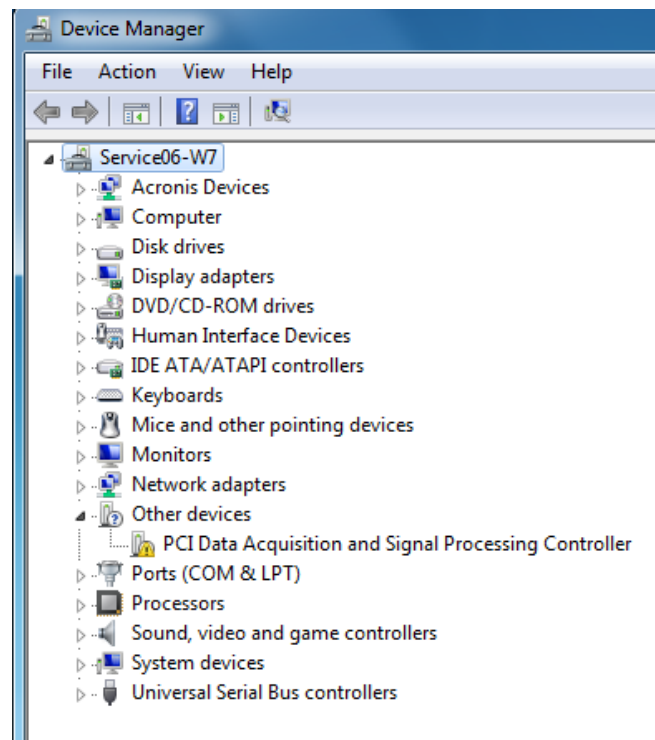
1. Switch off the PC.
2. Insert the board and fit the accessories.
3. Start up the PC and log in with administrator rights.
4. Click on "Start/Control Panel/Hardware and Sound".



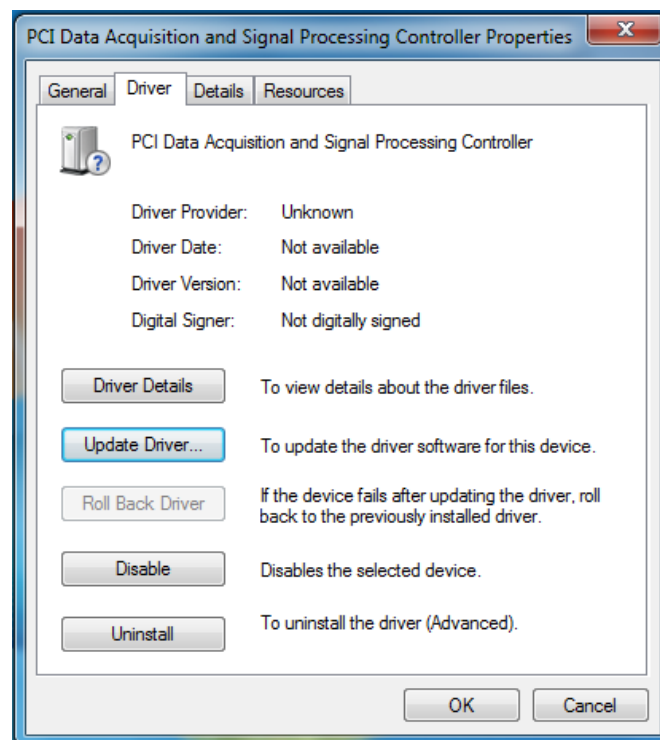
5. In the section "Devices and Printers", click on "Device Manager".



6. In the "Device Manager", double-click on "PCI Data Acquisition and Signal Processing Controller".

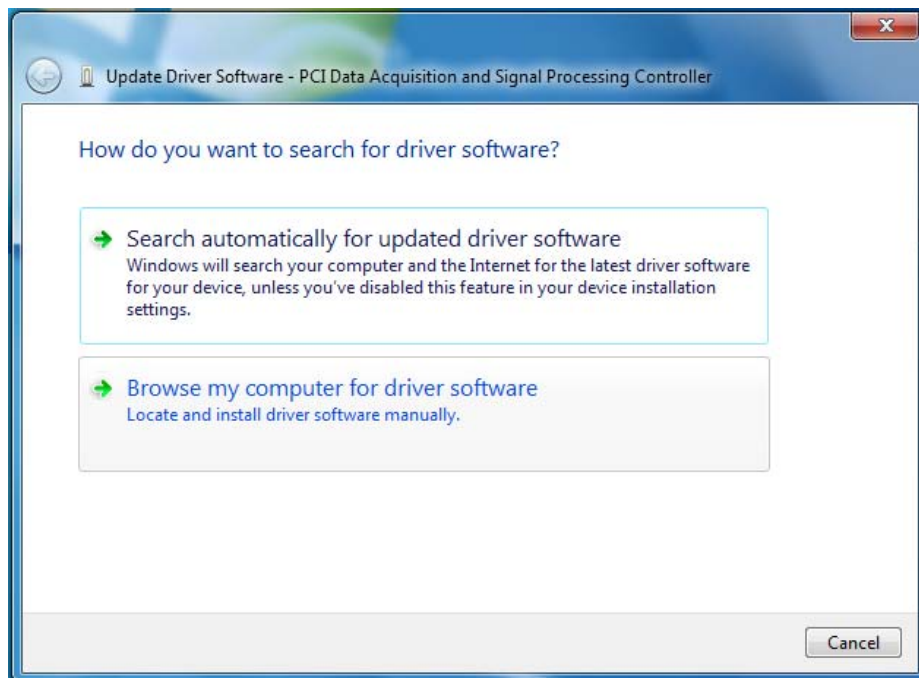


7. Select the tab "Driver" and click on the button "Update Driver...".





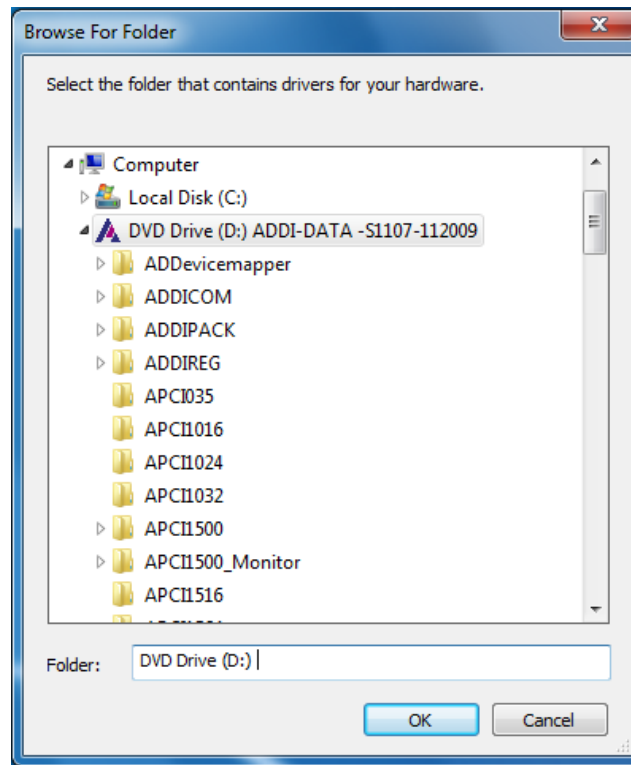
8. Click on the button "Browse my computer for driver software".



9. Click on "Browse".

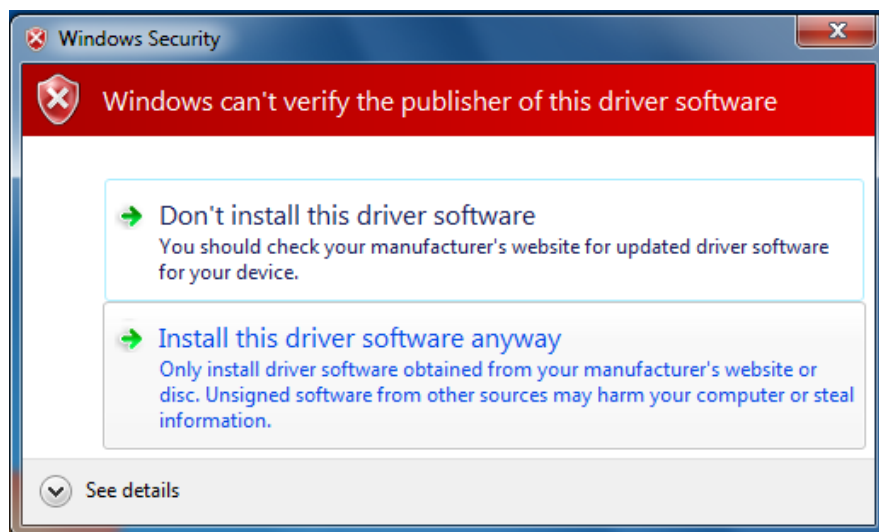


10. Insert CD 1 "ADDI-DATA Standard Drivers" into the CD drive.
11. The CD 1 browser interface is automatically displayed. Reduce its size if it overlaps the hardware wizard.
12. Select the drive that contains CD 1. Afterwards, click on "OK", and in the following window, click on "Next".



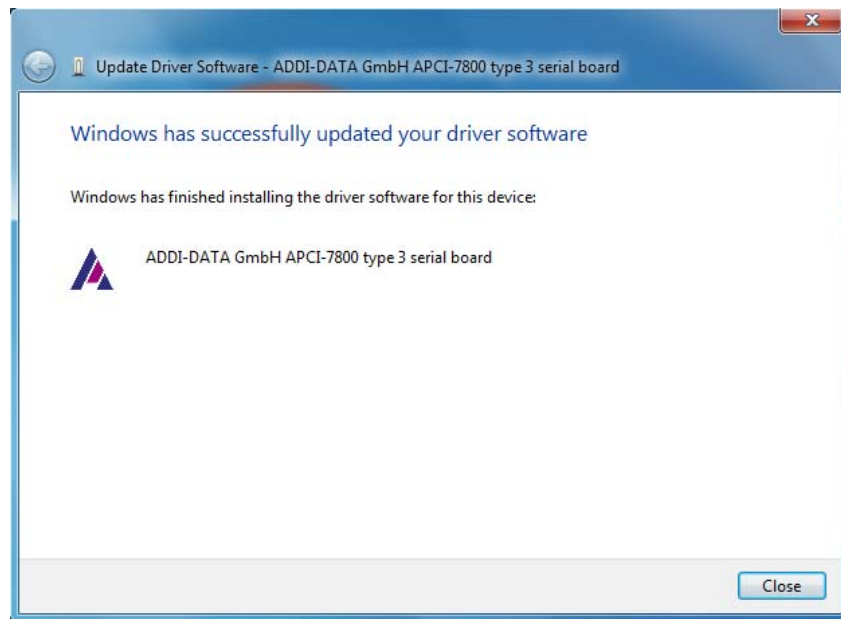
A Windows security warning is displayed.

13. Click on "Install this driver software anyway".

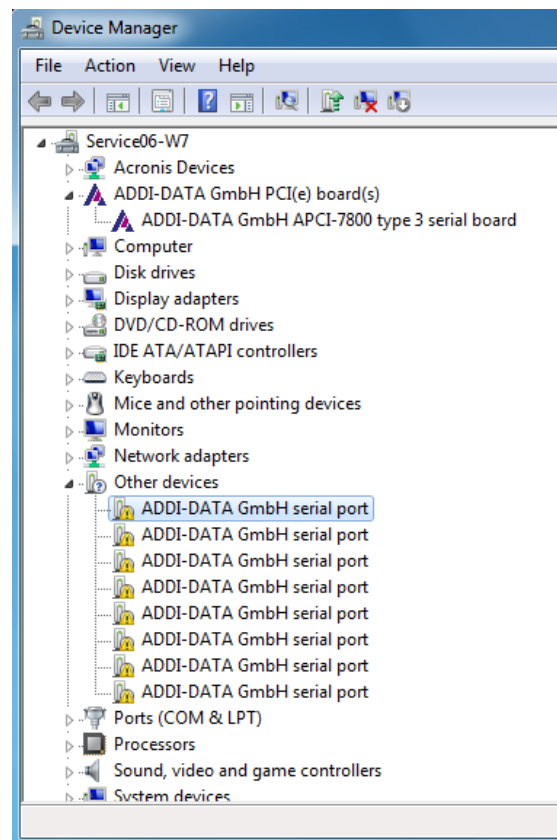


The installation of the driver software is finished.

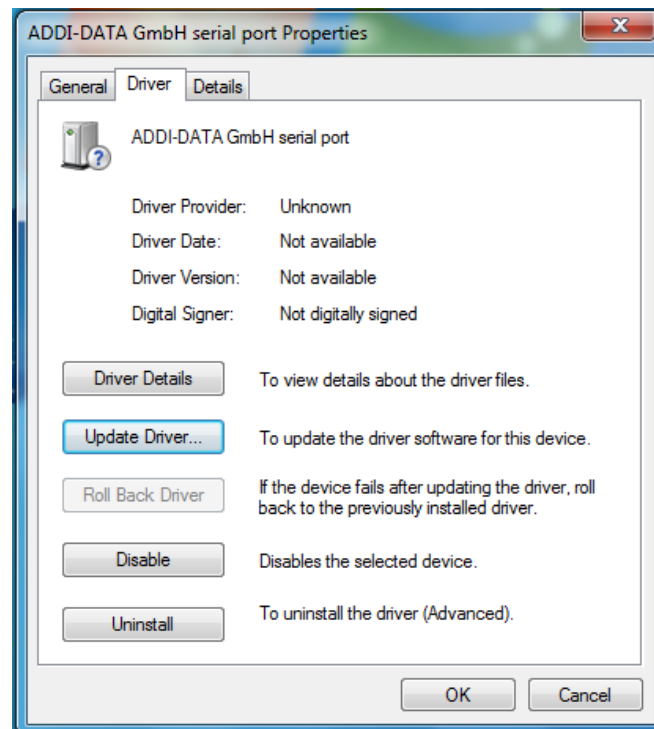
**14.** Click on "Close".



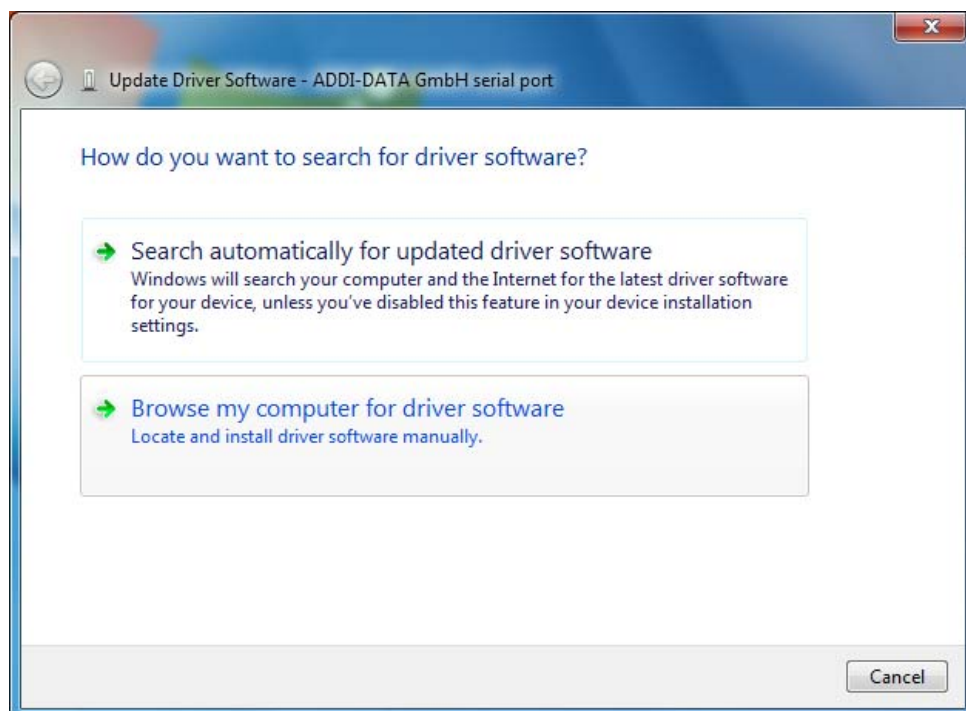
**15.** In the "Device Manager", double-click on "ADDI-DATA GmbH serial port" (first entry).



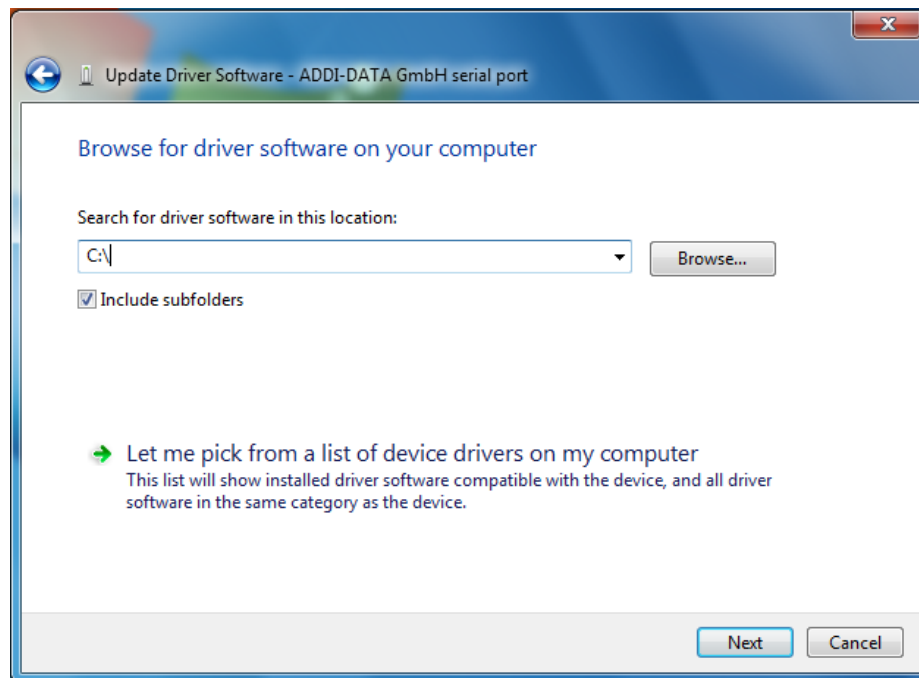
**16.** Select the tab “Driver” and click on the button “Update Driver...”.



**17.** Click on the button “Browse my computer for driver software”.



**18.** Click on "Next".

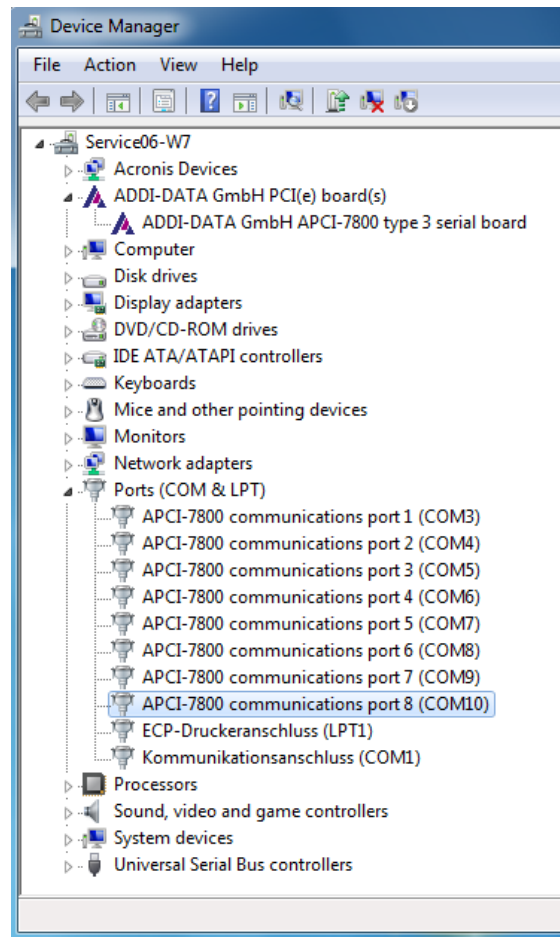


The installation of the driver software is finished.

**19.** Click on "Close".



- 20.** In the “Device Manager”, double-click on “ADDI-DATA GmbH serial port” (first entry) and repeat steps 16 to 19.
- 21.** Repeat step 20 until all of the board interfaces are updated. Afterwards, the board will be ready for operation.



In the “Device Manager” (via “Start/Control Panel/Hardware and Sound/Devices and Printers/Device Manager”), you can configure each interface according to your requirements (see Technical Description of your board).

### 5.5.2 Installation of further boards without ADDIPACK/ADDIREG

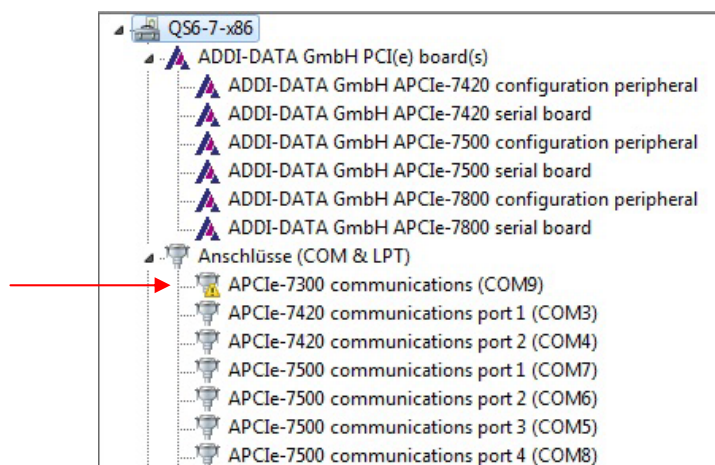
- 1.** Repeat steps 1 to 3 in Chapter 5.5.1.  
CD 1 “ADDI-DATA Standard Drivers” must be inserted in the CD drive.  
As the PC recognises those boards, the installation runs automatically.
- 2.** Reboot the PC.  
The installation is finished. The board is ready for operation.

### 5.5.3 Replacement of boards without ADDIPACK/ADDIREG

1. Switch off the PC.
2. Remove a board from its slot and insert the desired board into the same slot.
3. Fit the accessories.
4. Repeat steps 3 to 5 in Chapter 5.5.1.

In the "Device Manager", under "Ports (COM & LPT)", the interface entry of the removed board is still displayed and marked by a yellow warning symbol with an exclamation mark.

5. Double-click on this entry in order to update the driver software.



6. Repeat steps 7 to 12 in Chapter 5.5.1.

An error message is displayed.

7. Click on „Close“.

In the "Device Manager", under "Ports (COM & LPT)", the newly inserted board is now registered. The entry is marked by a yellow warning symbol with an exclamation mark.

8. Reboot the PC.

The installation is finished. The board is ready for operation.

## 5.6 Installation of 16-bit drivers



### **IMPORTANT!**

The MS-DOS driver is only supplied on request.

If you want to operate the board under MS-DOS, the ADDICOM software driver is available on request.

Please contact our service line for more information:

Tel: +49 7229 1847-0.

## 5.7 Installation of the MTTTY testing program

1. Insert CD 1 "ADDI-DATA Standard Drivers" into the CD drive.
2. The CD 1 browser interface is automatically displayed. If not, open the Windows Explorer, select the CD 1 drive and open the file "AD-Drivers.exe".
3. On the CD 1 homepage, click on the desired language.
4. From the left-hand side menu, select the applied bus type (e.g. PCI).
5. Click on the name of your board and then on the respective operating system.
6. By clicking on the link "MTTTY testing program", the program is immediately available.
7. You can save the testing program on your PC: In the Windows Explorer, copy the file "Mttty\_255.exe" from the directory "[CD 1]:\Mttty" to your hard disk.

For more detailed information on the MTTTY program and the board test, see the Technical Description of your board.



## 6 Software update

To update the drivers, programs and INF files installed on your PC, you can download the respective programs or files from our website ([www.addi-data.com](http://www.addi-data.com)), install them from CD 1 (latest version) or receive them from our service line on a data carrier or by e-mail.

### 6.1 Update under Windows XP/2000/Vista (32-bit)/7

#### 6.1.1 Driver and program update

In case you want to update the driver of your ADDI-DATA board or ADDI-DATA programs, you should first uninstall the present version on your PC.

1. Open the list which contains all of the installed programs via "Start/Control Panel/Add or Remove Programs<sup>1</sup>".
2. Select the driver of your board or the ADDI-DATA program (e.g. ADDIREG) and click on "Remove"<sup>2</sup>.
3. Follow the instructions of the uninstallation program.
4. Install the new driver or program version from your data carrier by executing the "setup.exe" file. If you install the software from CD 1, you just have to follow the relevant links on the browser interface (see Chapter 1.2.1).

#### 6.1.2 INF file update (PCI/PCIe boards)

1. In the folder "[WINDOWS]\INF"<sup>3</sup> on your hard disk, search for all INF and PNF files beginning with "oem[numbers]". Use the search function of the Windows Explorer for this purpose. Search for the files "oem\*.inf" and "oem\*.pnf" with "ADDI-DATA" as a phrase in the file.



### IMPORTANT!

The INF folder is a hidden folder!

---

<sup>1</sup> or "/Programs and Features" (Windows Vista) or "/Programs/Uninstall a program" (Windows 7)

<sup>2</sup> or "Uninstall" (Windows Vista/7)

<sup>3</sup> e.g. "C:\WinNT\Inf" or "C:\WINDOWS\inf"

2. If the INF folder is not displayed, you have to perform the following steps:  
In the menu bar of the Windows Explorer, click on "Tools"<sup>1</sup> and then on "Folder Options"<sup>2</sup>. On the tab "View", in the section "Advanced settings", select the folder "Hidden files and folders". Click on the option "Show hidden files and folders"<sup>3</sup>.
3. Delete all of the files mentioned in step 1.

**Under "[WINDOWS]\INF", the files must no longer be available.**

So when another ADDI-DATA board is installed, the operating system requests the current INF files from the indicated data carrier and saves them. If you have not deleted the old INF files, they are automatically used again.

4. Open the "Device Manager" via "Start/Control Panel/System<sup>4</sup>/Hardware". Right-click on the name of your board, and afterwards, click on "Uninstall".
5. Reboot the PC.
6. The hardware wizard opens to install the INF files and the driver. Continue according to the installation instructions for your board and your operating system (see previous chapters).

In the event that you have downloaded the INF files from our website or have received them from our service line, you have to indicate their memory location (see the following windows under Windows XP and Windows Vista).

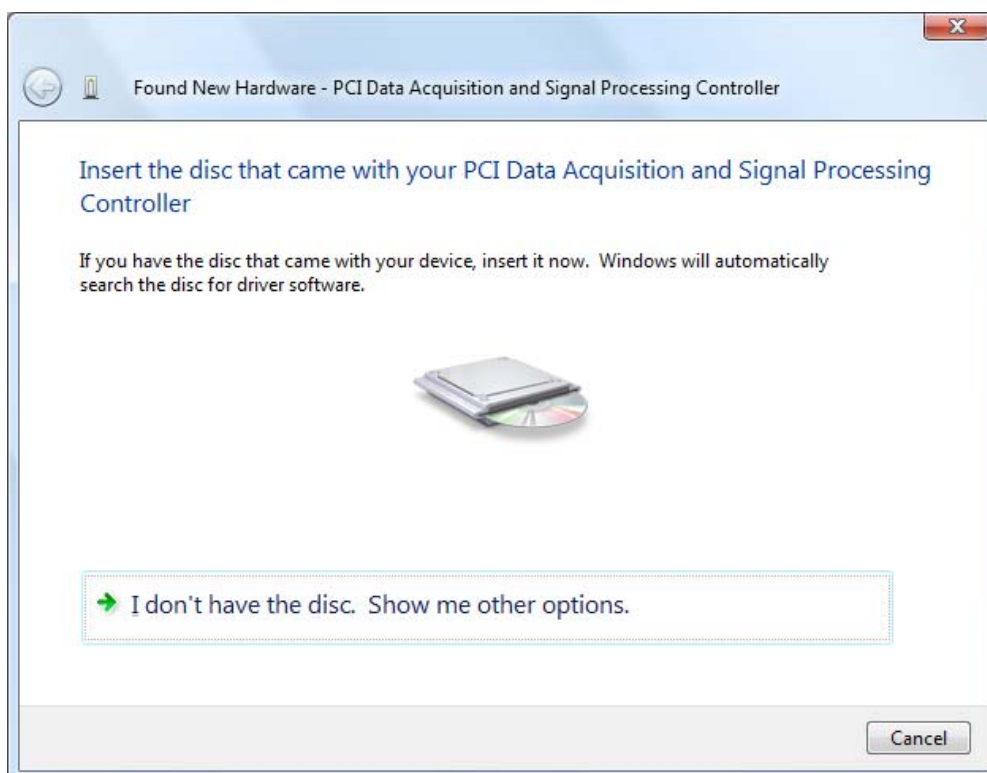
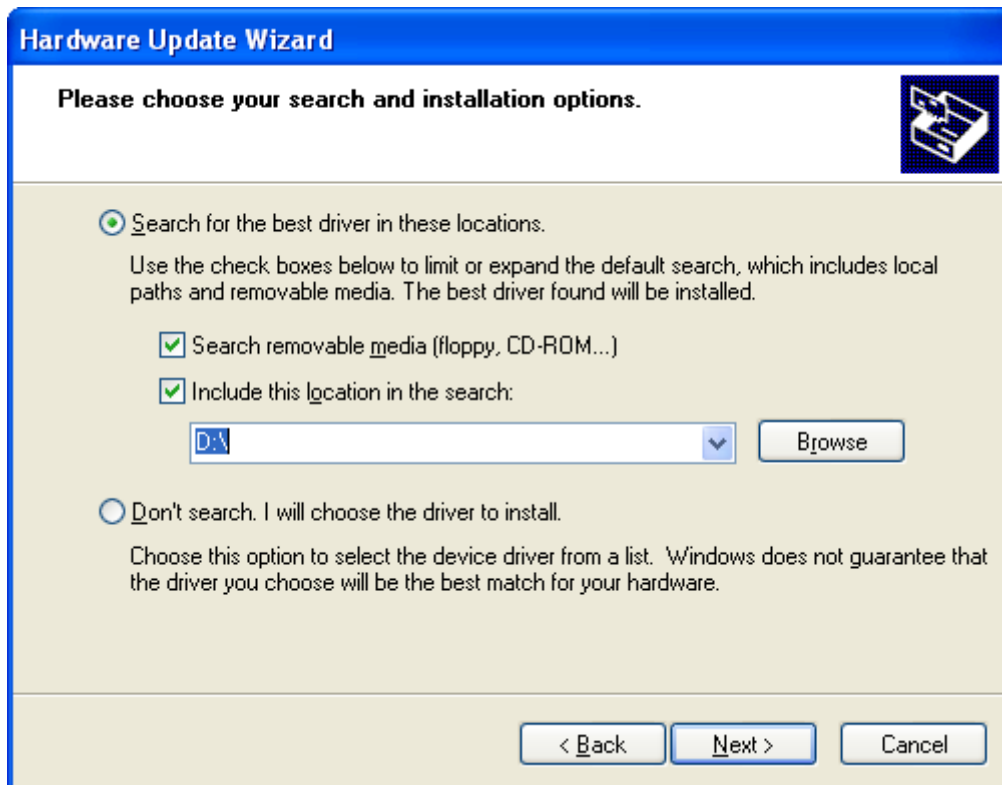
---

<sup>1</sup> or "Organize" (Windows Vista/7)

<sup>2</sup> or "Folder and search options" (Windows Vista/7)

<sup>3</sup> or "Show hidden files, folders, and drives" (Windows 7)

<sup>4</sup> or "/Hardware and Sound/Devices and Printers" (Windows 7)



## 7 Uninstallation of software

### 7.1 Uninstallation under Windows XP/2000/Vista (32-bit)/7

#### 7.1.1 Uninstallation of drivers and programs

In case you want to uninstall the driver of your ADDI-DATA board or ADDI-DATA programs, proceed as follows:

1. Open the list which contains all of the installed programs via "Start/Control Panel/Add or Remove Programs<sup>1</sup>".
2. Select the driver of your board or the ADDI-DATA program (e.g. ADDIREG) and click on "Remove"<sup>2</sup>.
3. Follow the instructions of the uninstallation program.

#### 7.1.2 Uninstallation of INF files (PCI/PCIe boards)

1. In the folder "[WINDOWS]\INF"<sup>3</sup> on your hard disk, search for all INF and PNF files beginning with "oem[numbers]". Use the search function of the Windows Explorer for this purpose. Search for the files "oem\*.inf" and "oem\*.pnf" with "ADDI-DATA" as a phrase in the file.



### IMPORTANT!

The INF folder is a hidden folder!

2. If the INF folder is not displayed, you have to perform the following steps:  
In the menu bar of the Windows Explorer, click on "Tools"<sup>4</sup> and then on "Folder Options"<sup>5</sup>. On the tab "View", in the section "Advanced settings", select the folder "Hidden files and folders". Click on the option "Show hidden files and folders"<sup>6</sup>.
3. Delete all of the files mentioned in step 1.
4. Open the "Device Manager" via "Start/Control Panel/System<sup>7</sup>/Hardware". Right-click on the name of your board, and afterwards, click on "Uninstall".

---

<sup>1</sup> or "/Programs and Features" (Windows Vista) or "/Programs/Uninstall a program" (Windows 7)

<sup>2</sup> or "Uninstall" (Windows Vista/7)

<sup>3</sup> e.g. "C:\WinNT\Inf" or "C:\WINDOWS\inf"

<sup>4</sup> or "Organize" (Windows Vista/7)

<sup>5</sup> or "Folder and search options" (Windows Vista/7)

<sup>6</sup> or "Show hidden files, folders, and drives" (Windows 7)

<sup>7</sup> or "/Hardware and Sound/Devices and Printers" (Windows 7)

**IMPORTANT!**

The following information only applies to PCI and PCIe boards without **ADDIPACK** or **ADDIREG**!

5. In the "Device Manager", click on the plus sign in front of the entry "Ports (COM & LPT)". Afterwards, right-click on each subentry and select the option "Uninstall".

## 8 Contact and support

**Do you have any questions? Write or phone us:**

Address: ADDI-DATA GmbH  
Airpark Business Center  
Airport Boulevard B210  
77836 Rheinmünster  
Germany

Phone: +49 7229 1847-0

Fax: +49 7229 1847-222

E-mail: [info@addi-data.com](mailto:info@addi-data.com)

**Manual and software download from the Internet:**

[www.addi-data.com](http://www.addi-data.com)